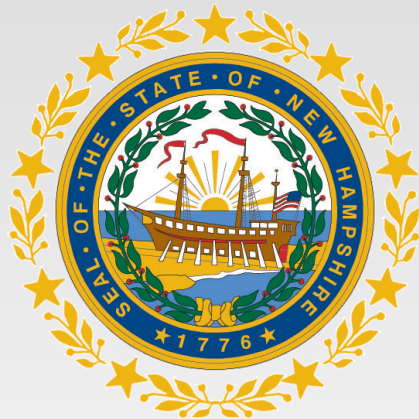


**State of New Hampshire
Department of Health and Human Services**

Trending in Data During COVID-19

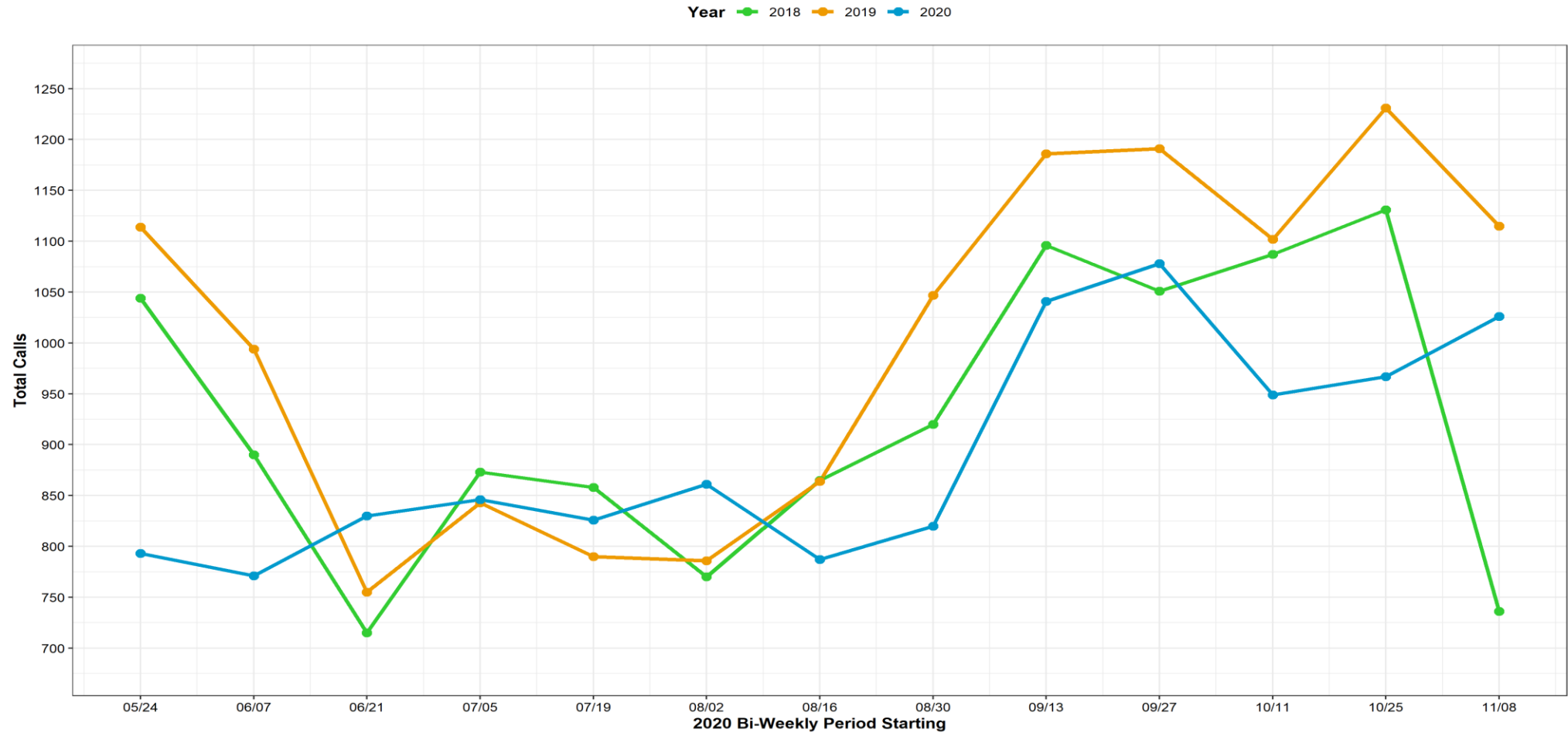
Division for Children, Youth and Families

November 24, 2020



Child Protection Central Intake Data

All Referrals to Intake: Comparing 2018 - 2020
Bi-Weekly Periods May. 24 - Nov. 21



Extracted from Bridges (SACWIS) on 2020-11-24

Note: Due to a Bridges maintenance issue, some reports from Friday 7/31 and Saturday 8/1 are not included for 7/19 bi-week but in the 8/2 bi-week.



Screened In Referrals (accepted for further assessment)

Screened In Referrals: Comparing 2018 - 2020, Based on Referral Date
Bi-Weekly Periods May. 24 - Nov. 21

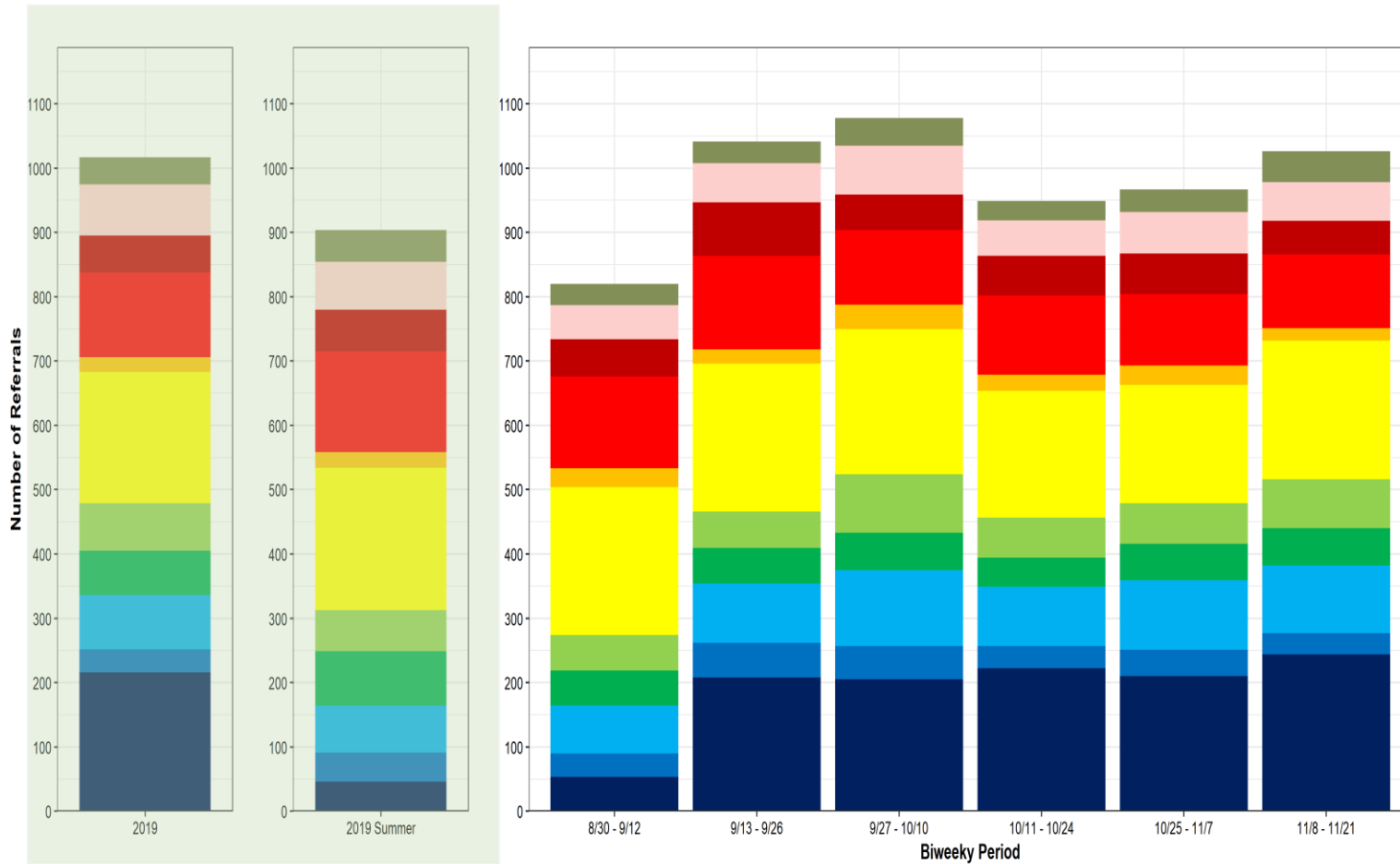


Extracted from Bridges (SACWIS) on 2020-11-24

Note: Due to a Bridges maintenance issue, some reports from Friday 7/31 and Saturday 8/1 are not included for 7/19 bi-week but in the 8/2 bi-week.



Child Protection Referrals by Reporter Type (Preliminary)



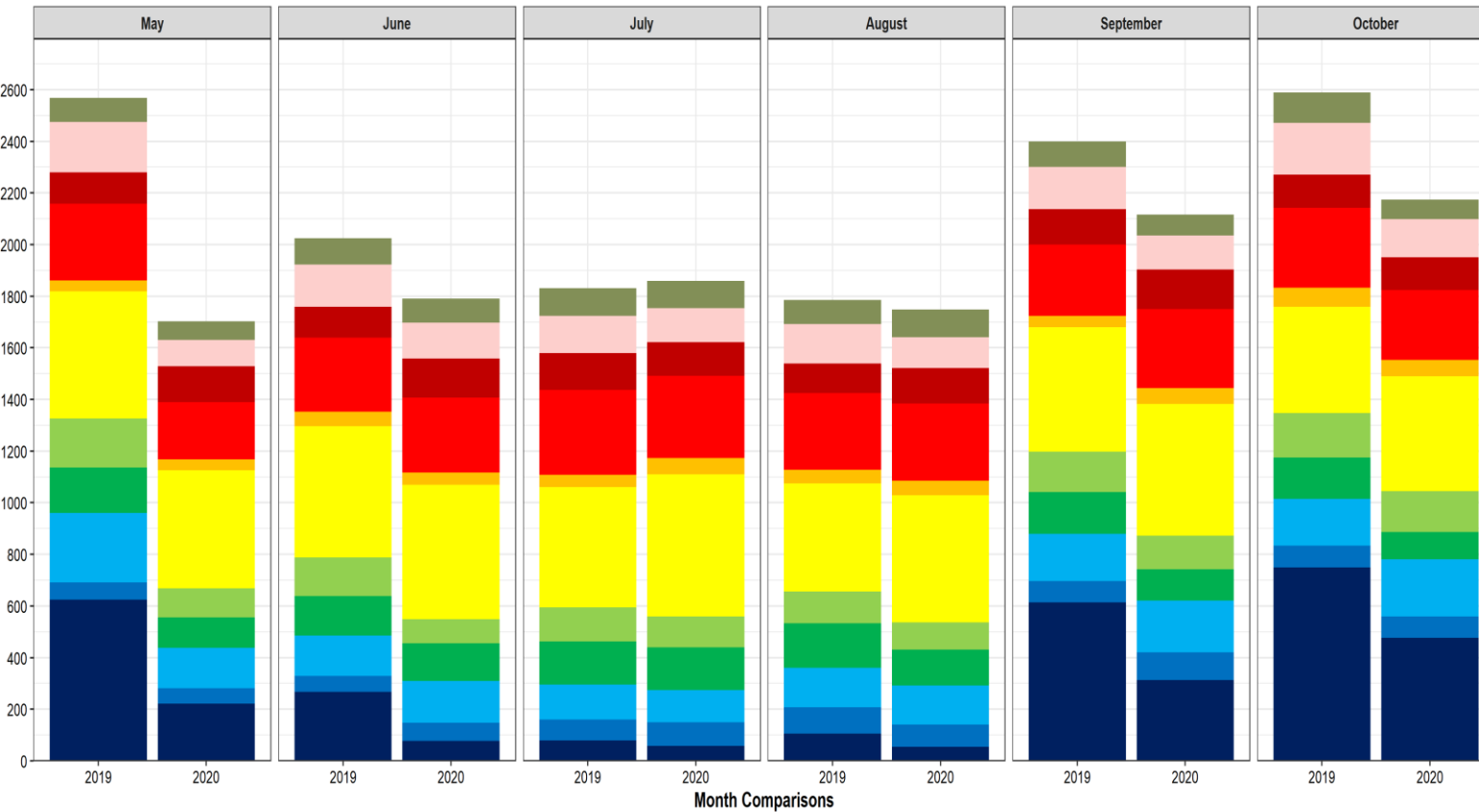
Data Extracted From Bridges On 2020-11-24

Category	Change from 2019 composite	Change from Last Biweek period	# from most recent biweek period
School/Childcare	13%	16%	244
CPSW	-8%	-20%	33
Mental Health	25%	-3%	105
Other	-16%	2%	58
Social Worker	3%	21%	76
Law Enforcement	6%	17%	216
Court/Probation/Guardian Ad Litem	-17%	-37%	19
Parent/Guardian/Family	-13%	4%	115
Anonymous/Unknown	-9%	-17%	52
Medical	-25%	-8%	60
Other Community Agency	13%	37%	48
Total	1%	6%	1026

Why this matters: tracking referrals by reporter helps us monitor the impact of COVID-19 on our reporting network and identify groups we could activate to look out for kids and support families



Child Protection Referrals by Reporter Type (Preliminary)



Data Extracted From Bridges On 2020-11-24

Category	Number From October Prior Year	Number From October Current Year	Change From October Prior Year To Current Year
School/Childcare	749	477	-36%
CPSW	84	83	-1%
Mental Health	181	220	22%
Other	161	106	-34%
Social Worker	173	158	-9%
Law Enforcement	411	446	9%
Court/Probation/Guardian Ad Litem	74	64	-14%
Parent/Guardian/Family	310	270	-13%
Anonymous/Unknown	128	126	-2%
Medical	201	149	-26%
Other Community Agency	118	75	-36%
Total	2590	2174	-16%

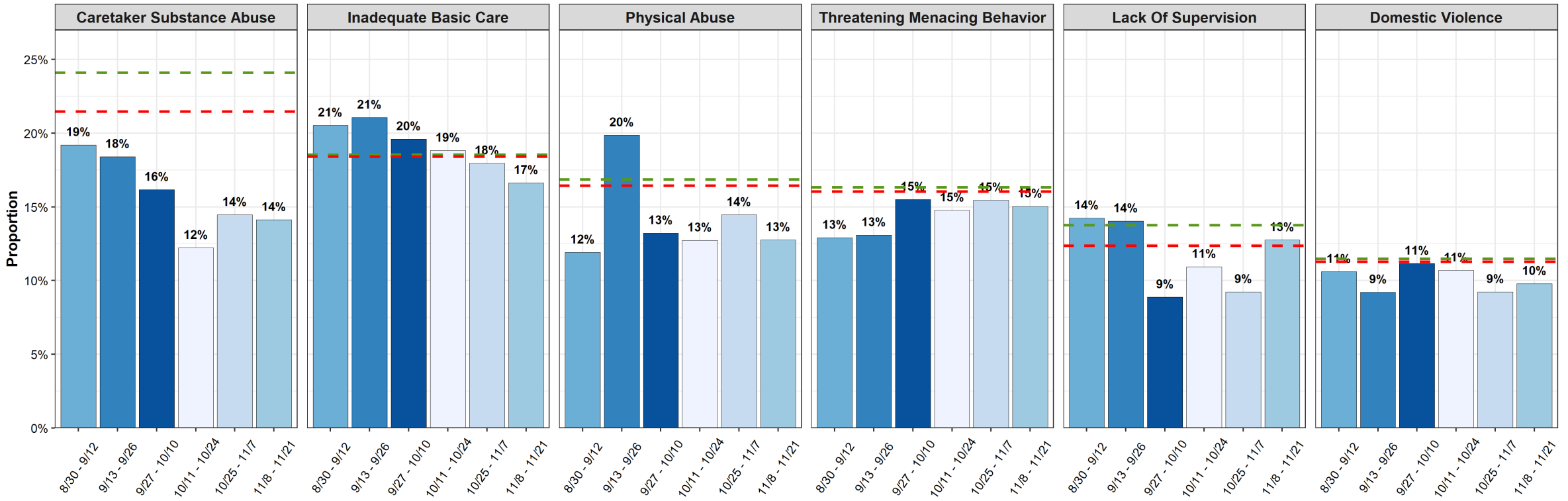
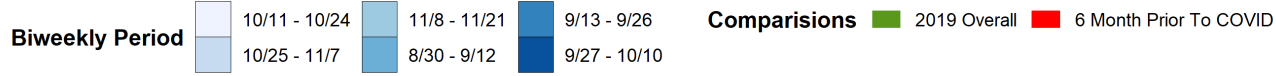
Why this matters: tracking referrals by reporter helps us monitor the impact of COVID-19 on our reporting network and identify groups we could activate to look out for kids and support families



Frequency of allegations (biweekly): Reports containing allegations of physical abuse after being less frequent over the last several biweekly periods.

Why this matters: COVID-19 may lead to increased incidence of certain types of abuse and neglect. Tracking these data will allow us to adjust our practices and respond to these trends.

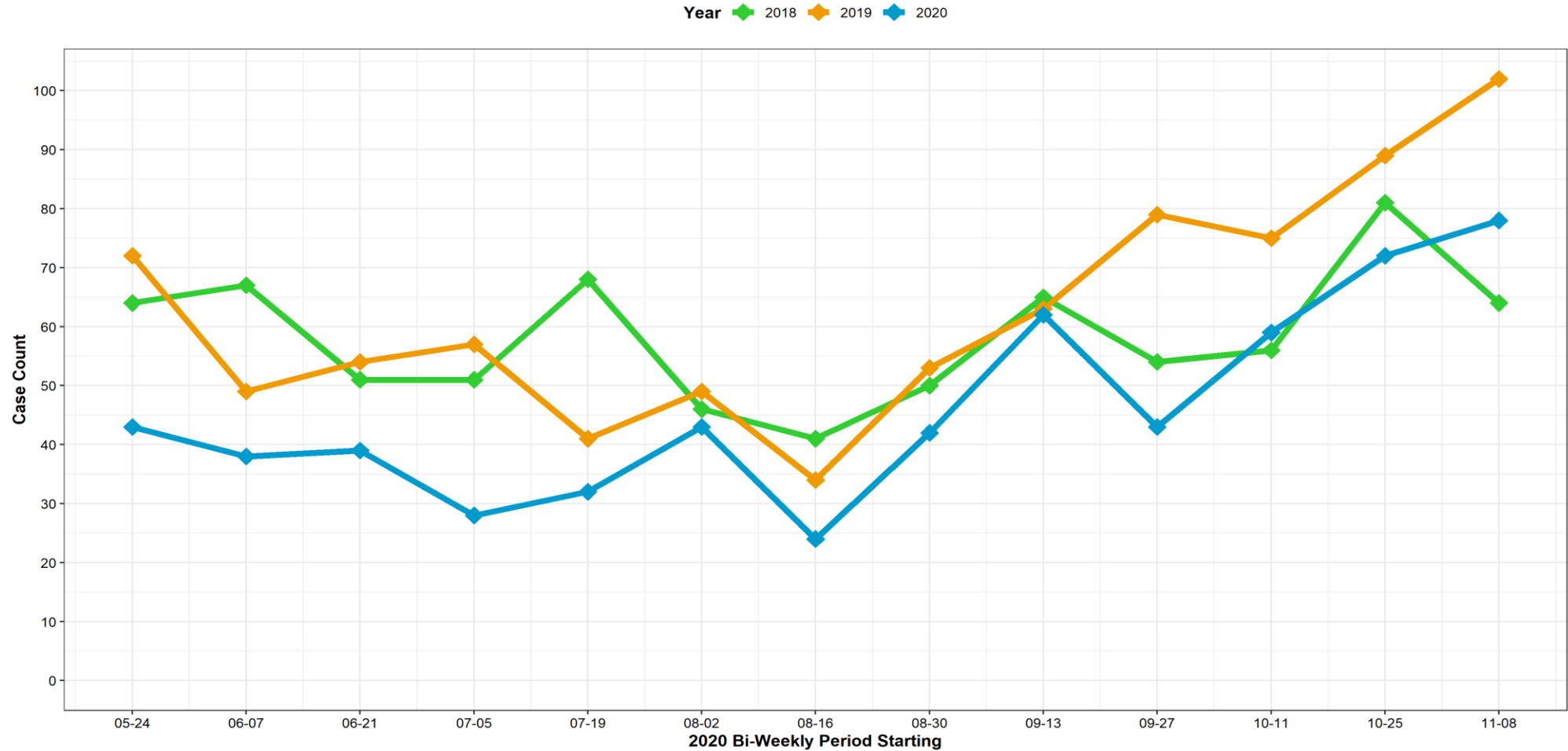
% of Screen-ins that contain allegation (biweekly): subset of top categories



Note: CY 2019 composite and 6 mo prior to COVID composite calculated for biweekly basis from data from September 1, 2019 to February 29, 2020. Top allegation types displayed above, accounting for 67% of all allegations. Share is calculated by counting the number of screen-ins that an allegation type appears in and dividing by total number of screen-ins for the period. Allegations were only counted once per screen-in so as to not measure duplicate allegations within the same referral (e.g., allegations of inadequate basic care against two parents in one referral only count as one allegation in the chart above). Includes allegations collected at intake and during assessment. Source: NH SACWIS - Bridges data extracted 10/13/2020.

Juvenile Justice Case Data

Juvenile Justice Cases Opened, Comparing Trends for Years 2018-2020
Bi-Weekly Periods May. 24 - Nov. 21

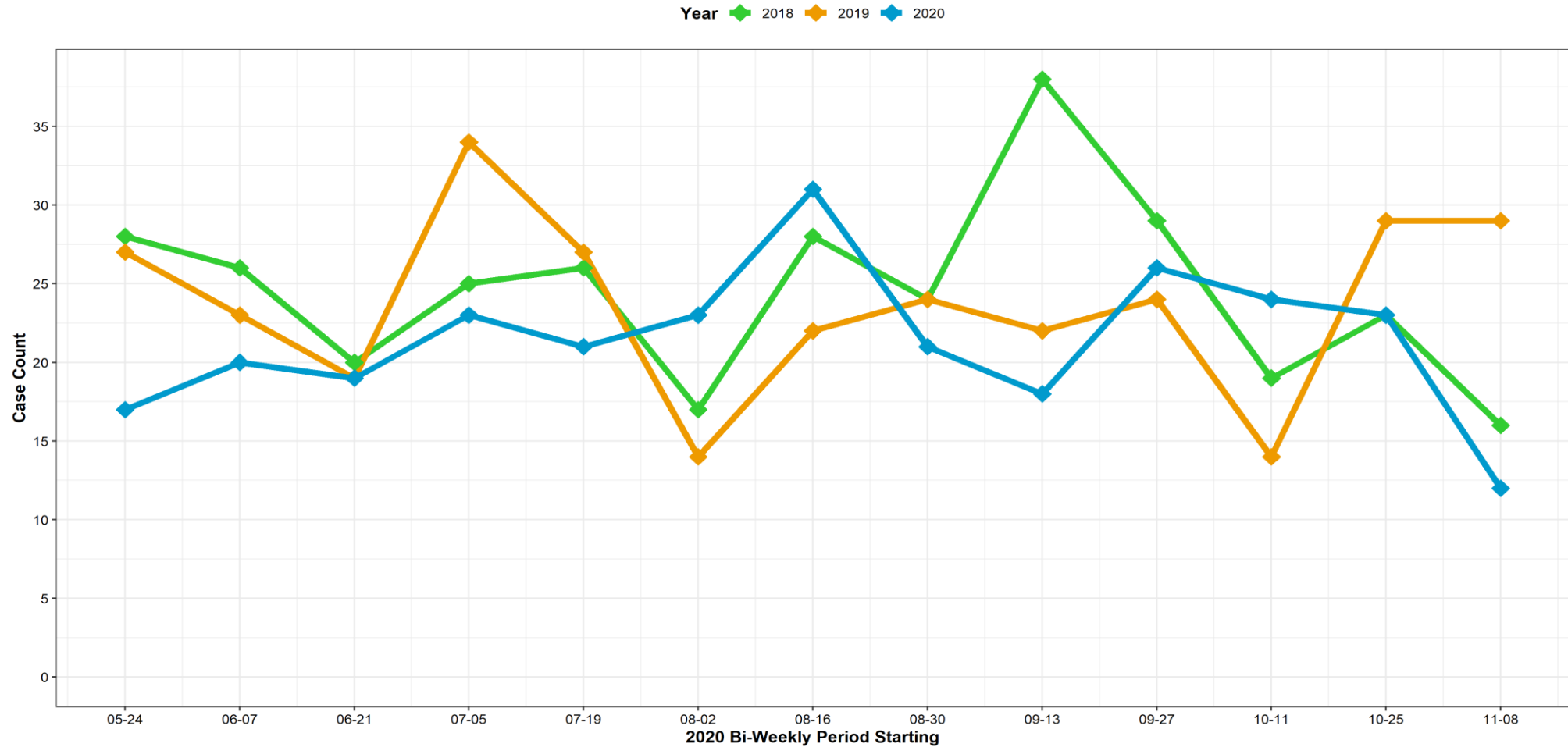


Data Source: NH SACWIS- Bridges, extracted on 2020-11-24



Child Protection Case Data

Child Protection Cases Opened, Comparing Trends for Years 2018-2020
Bi-Weekly Periods May. 24 - Nov. 21

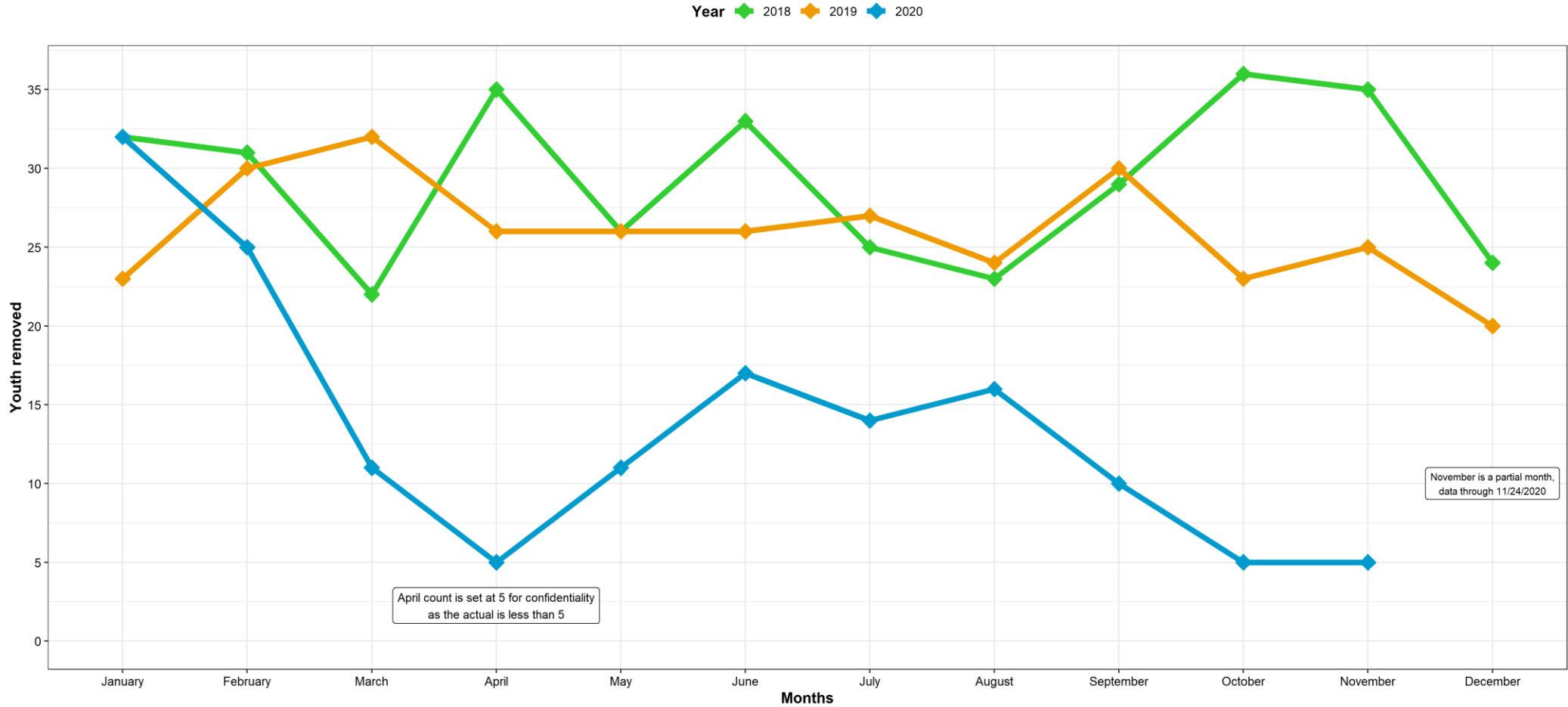


Data Source: NH SACWIS- Bridges, extracted on 2020-11-24



Juvenile Justice Removal Data

Juvenile Justice Removals, 2018 - 2020
Monthly Comparison by Year, Unique Count of Youth by Month

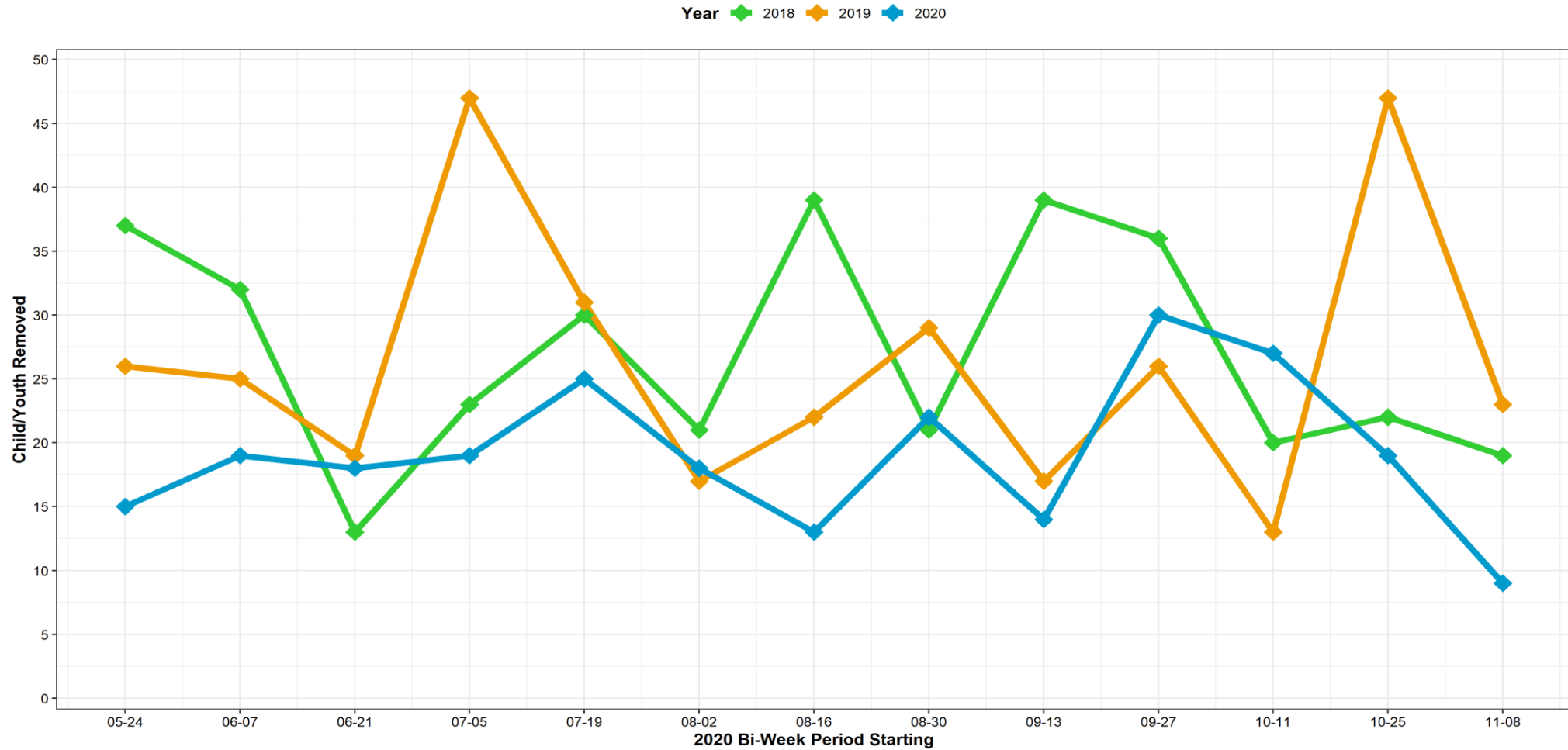


Data Source: NH SACWIS- Bridges, extracted on 2020-11-24



Child Protection Removal Data

Child Protection Removals, Comparison Years 2018-2020
Bi-Weekly Periods May. 24 - Nov. 21



Data Source: NH SACWIS- Bridges, extracted on 2020-11-24

