



# Care Management Entity (CME) Overview

# What is a Care Management Entity?

- Organizational entity that serves as a centralized accountable hub to coordinate all care for youth with complex behavioral health challenges who are involved in multiple systems, and their families.
- Goals of a CME
- The underlying goals of a CME are to:
  1. Improve clinical and functional outcomes;
  2. Enhance system efficiencies, and control costs;
  3. Foster resiliency in families and youth.

To achieve these objectives, the CME works to:

- a) Improve access to appropriate services and supports
- b) Reduce unnecessary use of costly services (e.g., out-of-home placements and lengths of stay)
- c) Employ health information technology to support service decision making
- d) Engage youth and their families as partners in care decisions to improve their youth's overall well-being and access to community resources

# History of Wraparound and SOC Development in New Hampshire

(Oct. 2012- Present)

SB14 written into law. Proposes expansion of CME to oversee residential treatment and adjudicated youth; Establish Statewide Mobile Crisis; Clearinghouse for EBP

## Implementation and Planning

First Wraparound Coordinators trained and families served

DHHS Establishes Bureau of Children's Behavioral Health

Family's First Prevention Act

2012

2013

2014

2015

2016

2017

2018

2019

DHHS Projects SOC and Wraparound

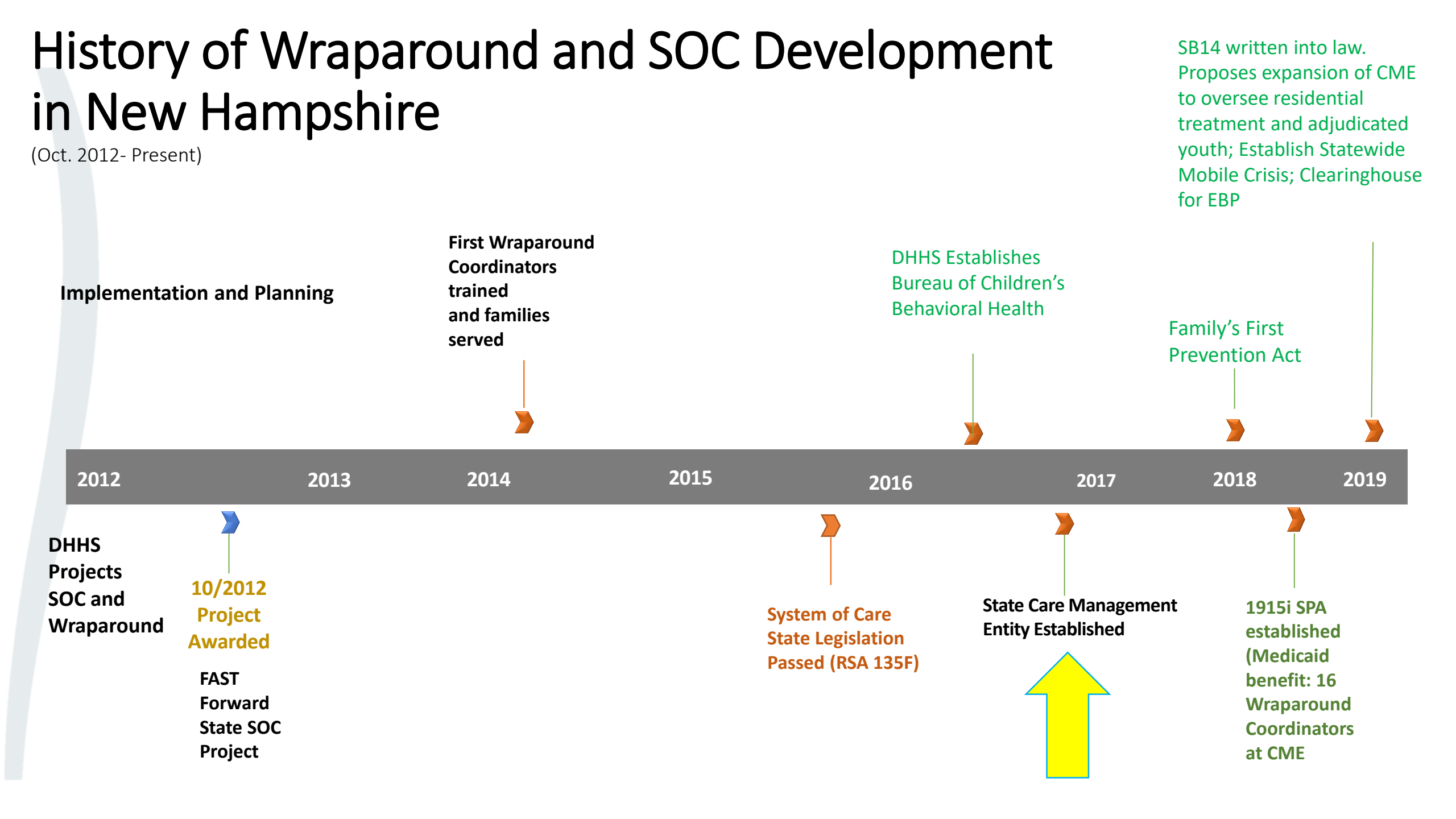
10/2012 Project Awarded

FAST Forward State SOC Project

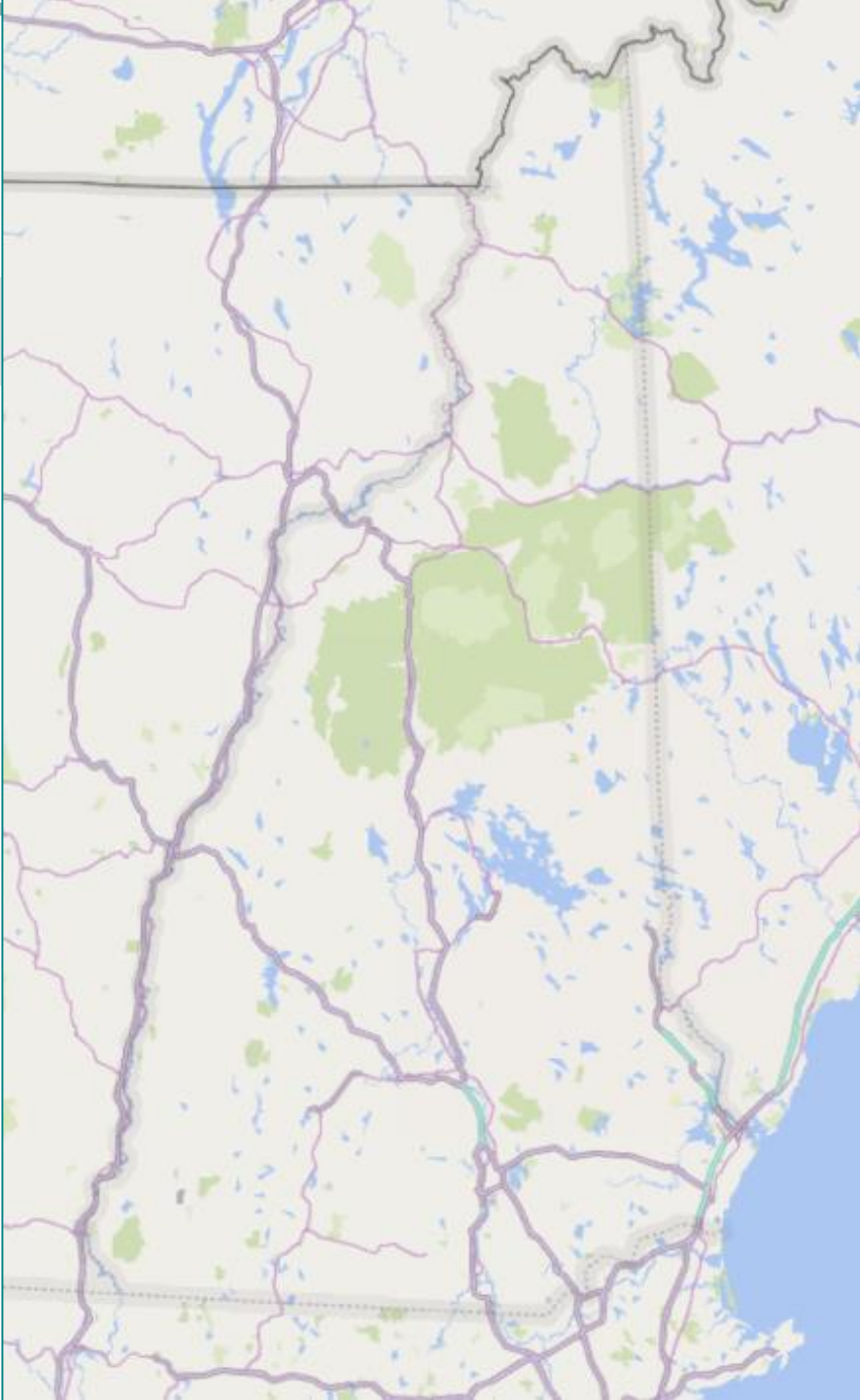
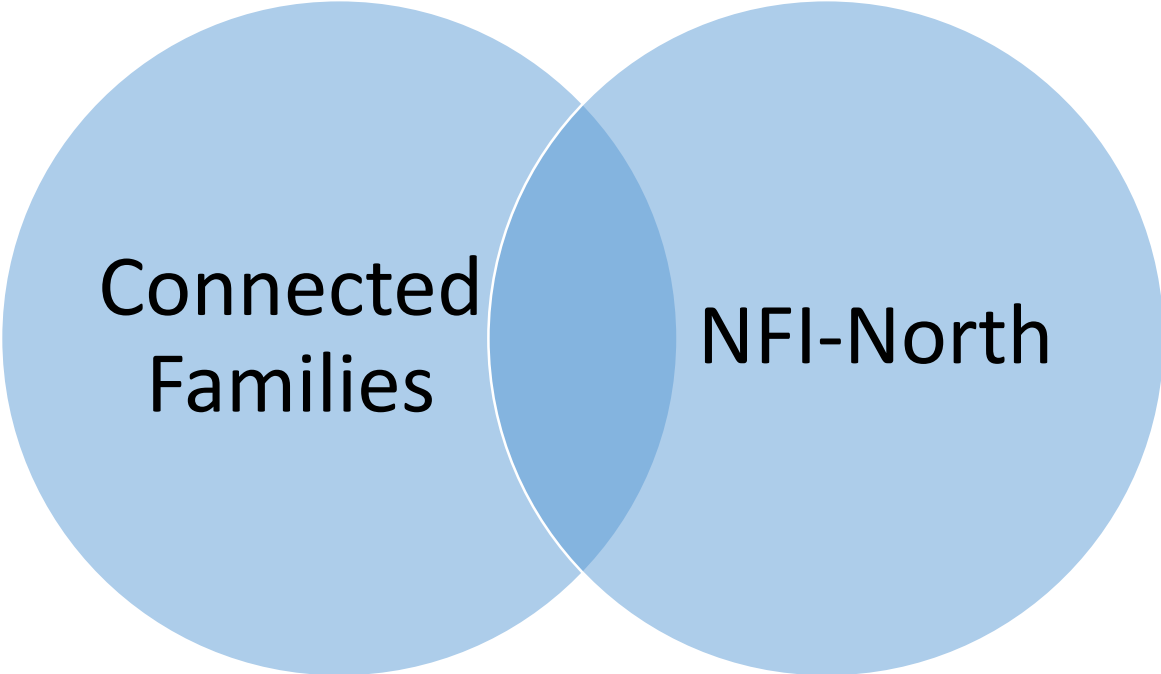
System of Care State Legislation Passed (RSA 135F)

State Care Management Entity Established

1915i SPA established (Medicaid benefit: 16 Wraparound Coordinators at CME)

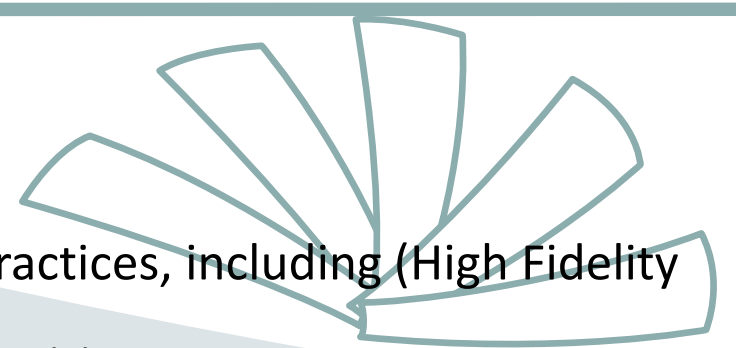


# Two CME's covering NH



# What Services are provided?

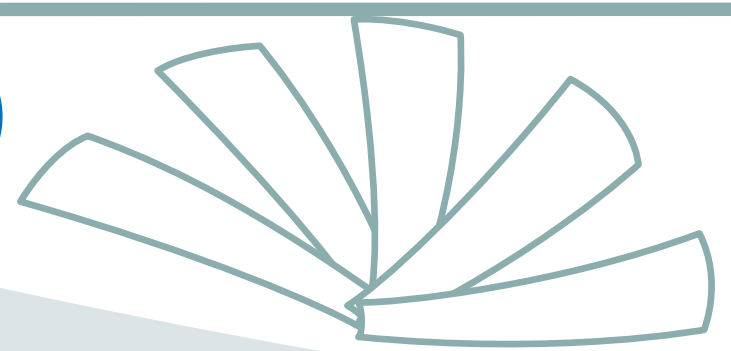
In what ways does a CME coordinate care?



- Evidenced Based Practices, including (High Fidelity Wraparound)
  - NH Wraparound Model
  - Utilizes Evidenced-Based Assessment and Outcome Measures
    - Child and Adolescent Needs and Strengths
    - Youth Progress Scale
    - Team Meeting Rating Scale
    - Document Review Measure
- Family Peer Support Services (NAMI NH)
  - Lived Experience and Empowerment of Family voice
  - Comprehensive model with fully developed competencies
- Youth Peer Support Services (Youth MOVE NH)
  - Lived Experience and Empowerment of Youth voice
  - Comprehensive model with fully developed competencies
- Customizable Goods and Services
- Service Provider Development
- Manages Medicaid benefit and costs (income and expenses)
- Ensures that all required data are collected including CANS, fidelity, and participant experience data



# Care Management Entity (RSA-135F)



## Expanded Responsibilities:

- The CME will help in the development of a continuum of community-based services and supports for children and youth with more complex needs
  - FAST Forward (Community-Based)
  - TR-ECC (Transitional Residential and (Psychiatric) Enhanced Care Coordination)

# Care Management Entity, cont.

## System Level:

- Develops provider network to provide SOC service array with Managed Care Organizations (MCOs) – utilizing current DCYF/Bureau of Behavioral Health (BBH) providers
- Develops/joins regional teams to assess capacity and barriers and community partnership –(Family Organizations)
- Manages provider contracts
- Highlighting service needs and gaps
- Gathering Data and informing system change
- Identifying underserved and special populations (New American Population)

