

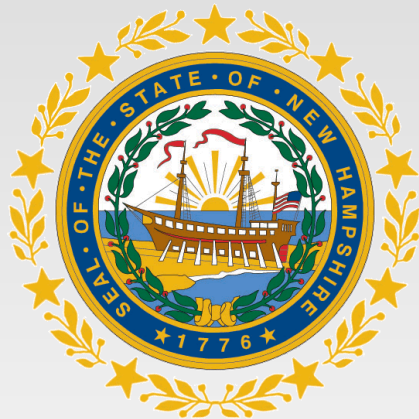
**State of New Hampshire  
Department of Health and Human Services**

---

**Monthly Data Dashboard**

**June 2022**

*Division for Children, Youth and Families*



# About this Data:

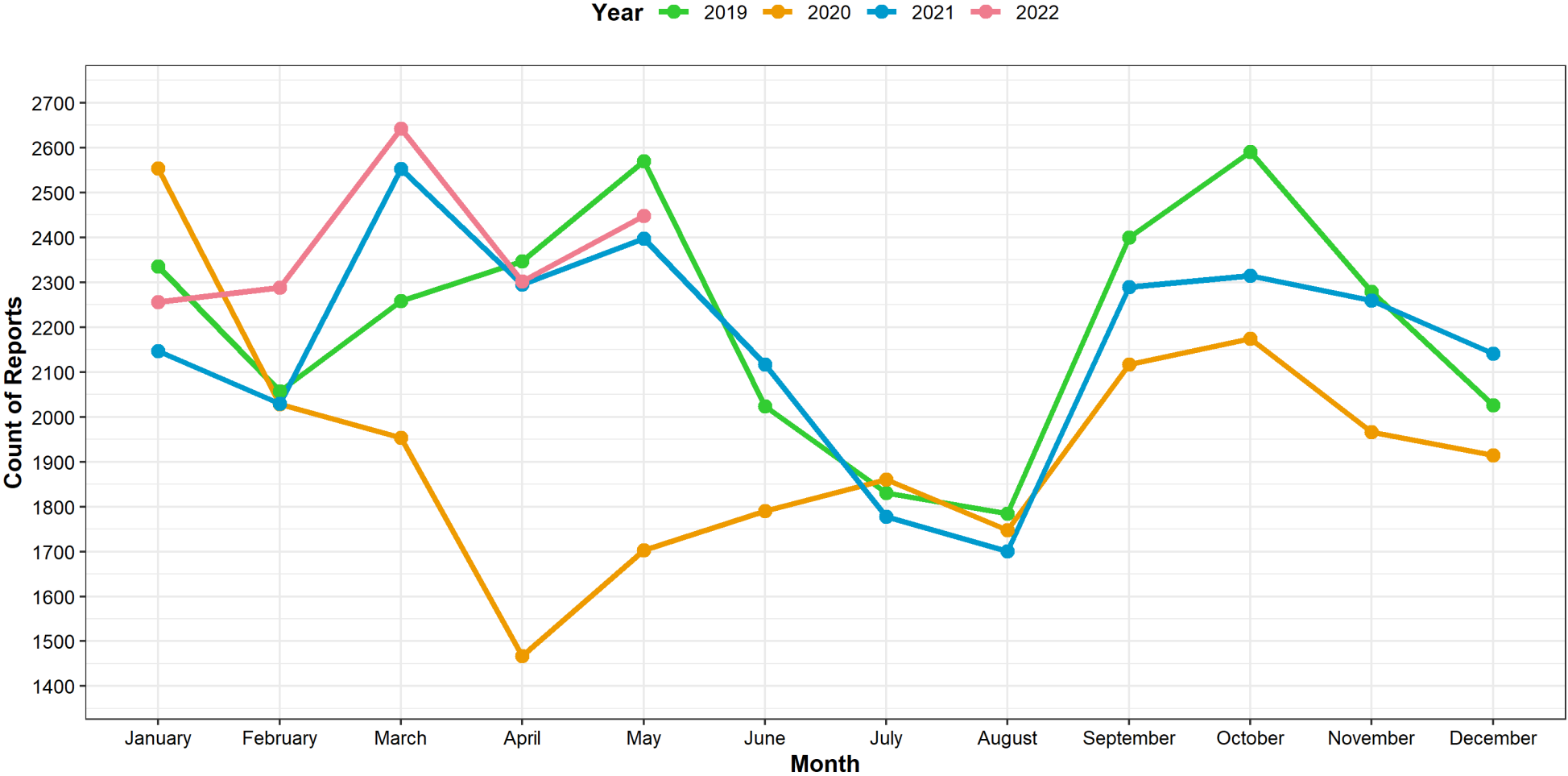
- Data reported throughout this book has been extracted from the New Hampshire statewide automated child welfare information system (SACWIS) known as Bridges.
- The data cannot be generalized given the multiple processes used to query the data and the complexity of the measures.
- Some of the underlying data is based on service authorizations which may take additional time to process. Accordingly, some data is withheld for an additional month to improve accuracy.
- All data in these monthly reports should be understood as preliminary as it is being extracted from a live case management system and will improve in accuracy over time as information is documented in individual cases. For this reason, please consider the annualized data reported in the annual DCYF Data Book as the most accurate source for identifying and following longer term trends.

<https://www.dhhs.nh.gov/dcyf/documents/dcyf-data-book-2020.pdf>



# Child Protection Intake- Reports to Central Intake

Child Protection: Reports To Central Intake  
Comparing 2019 - 2022

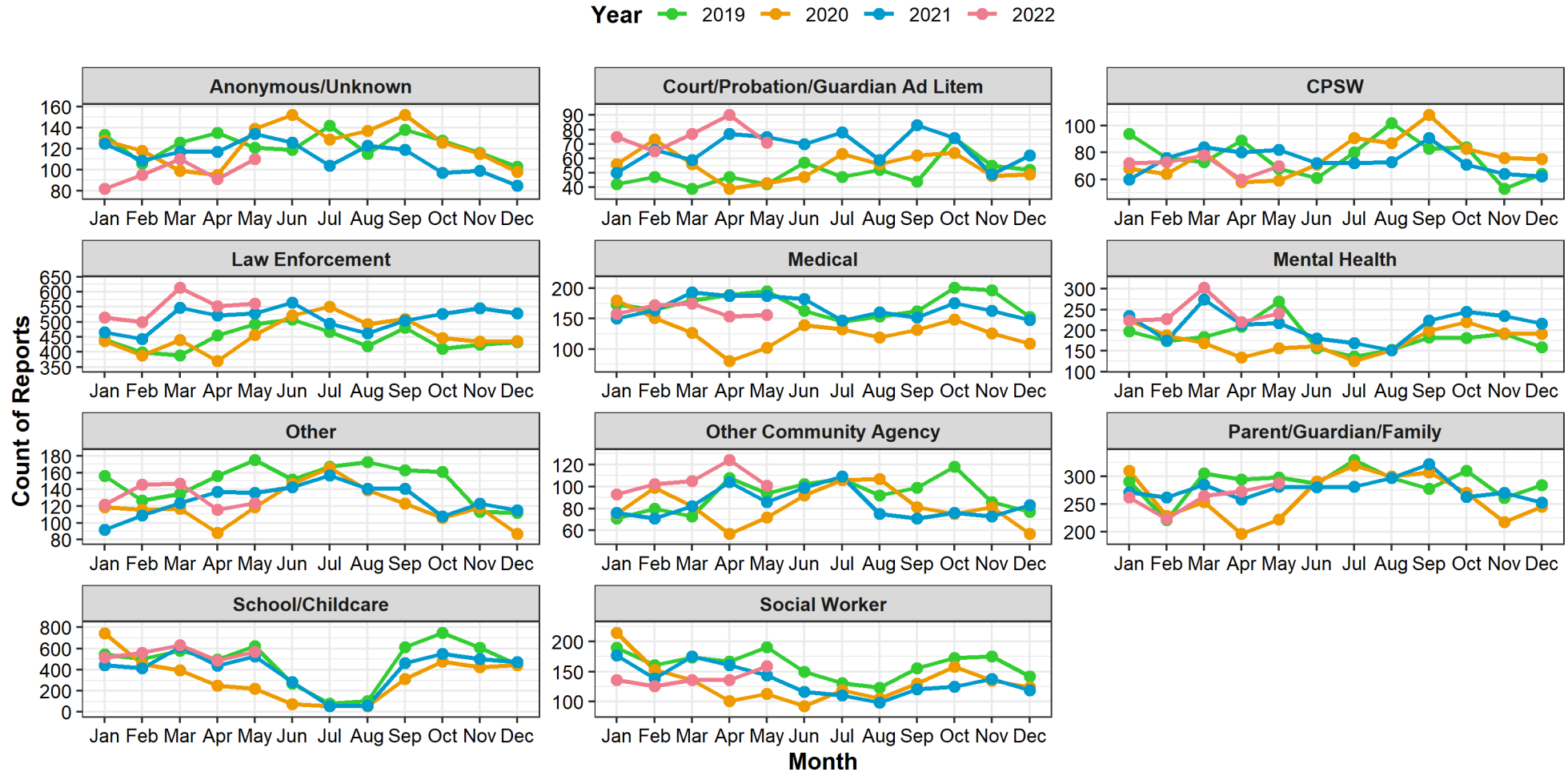


Extracted from Bridges (NH SACWIS) on 06/09/2022



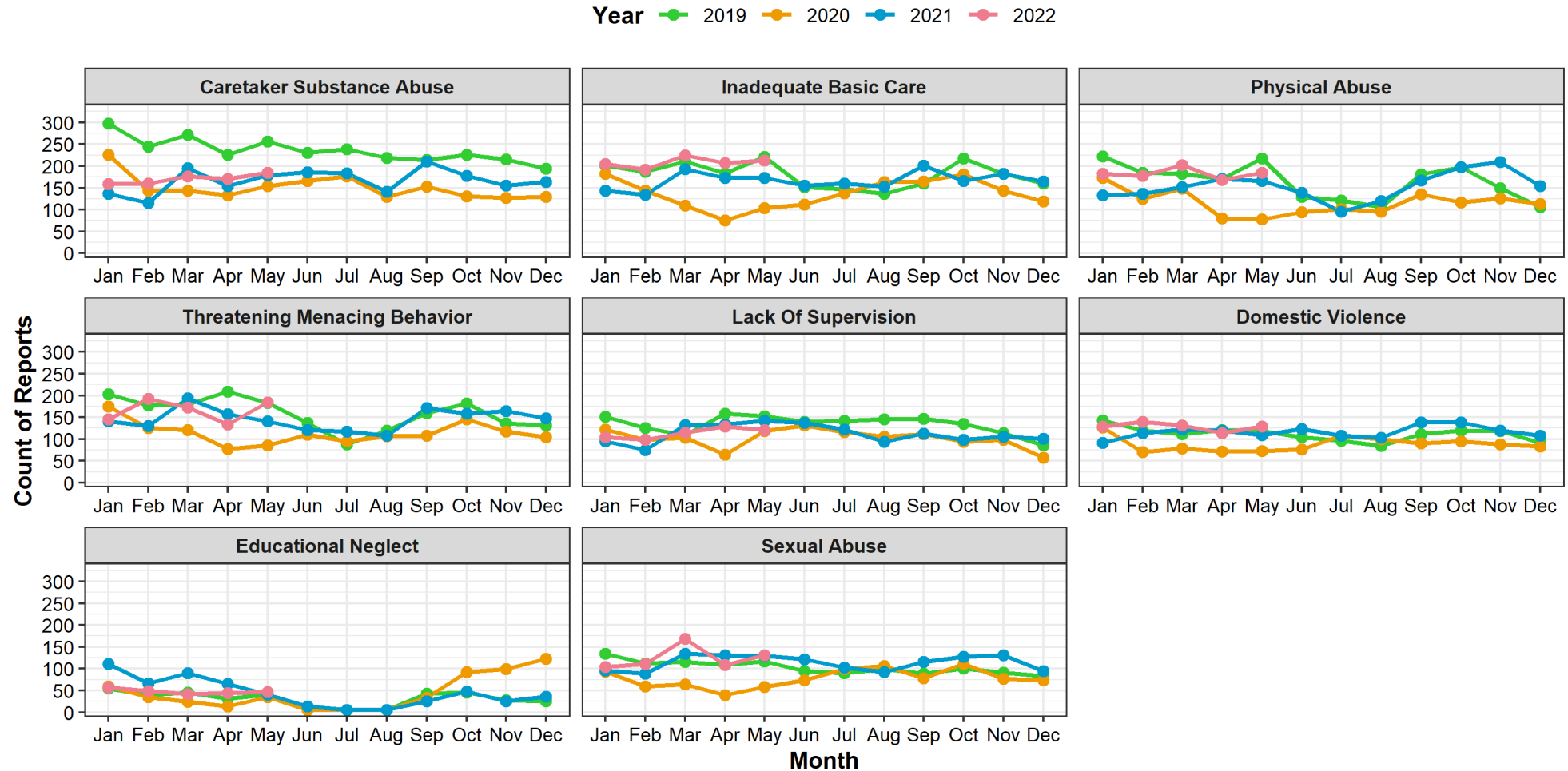
# Child Protection Intake-Referrals by Common Reporter Types

**Child Protection: Trends in Referrals by Reporter Type**  
Comparing 2019 - 2022



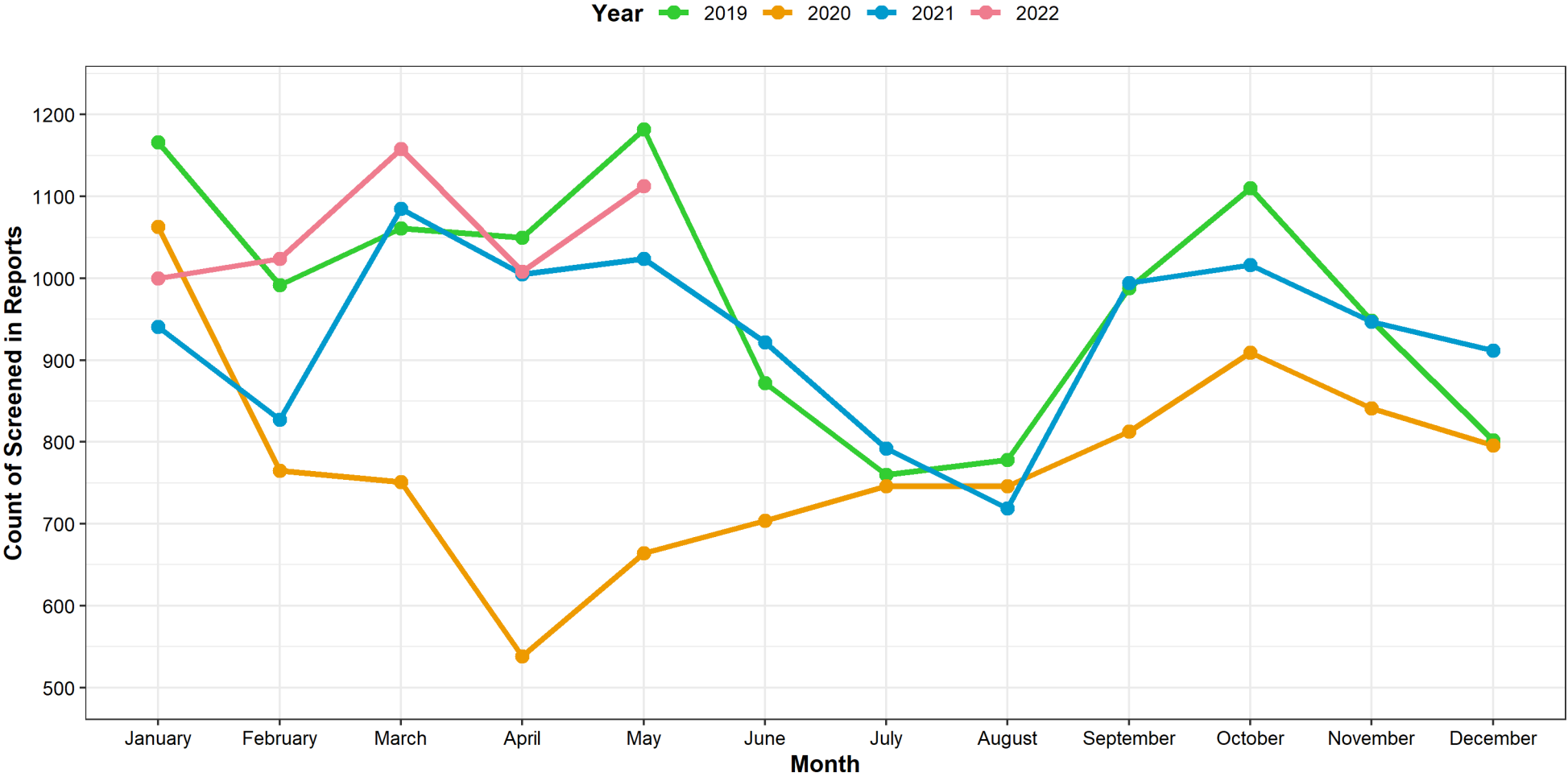
# Child Protection Intake- Allegation Types in Referrals

**Child Protection: Trends in Allegations**  
 Comparing 2019 - 2022 | Count of Screen Ins With at Least One Occurrence of Allegation



# Child Protection Intake- Screened-in Referrals

Child Protection: Screened In Referrals (accepted for further assessment)  
Comparing 2019 - 2022



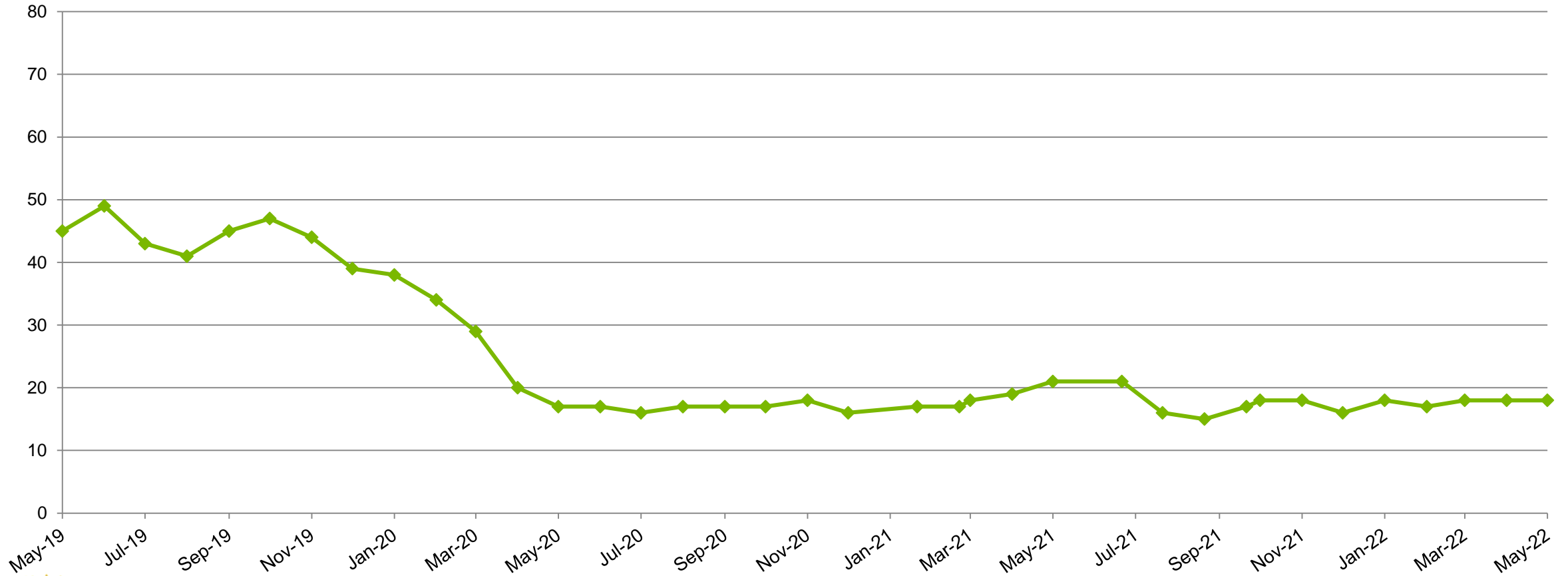
Extracted from Bridges (NH SACWIS) on 06/09/2022



# Child Protection Workforce Capacity- Assessment

## Average Assessments Assigned Per CPSW 2019-2022 (Last day of Month)

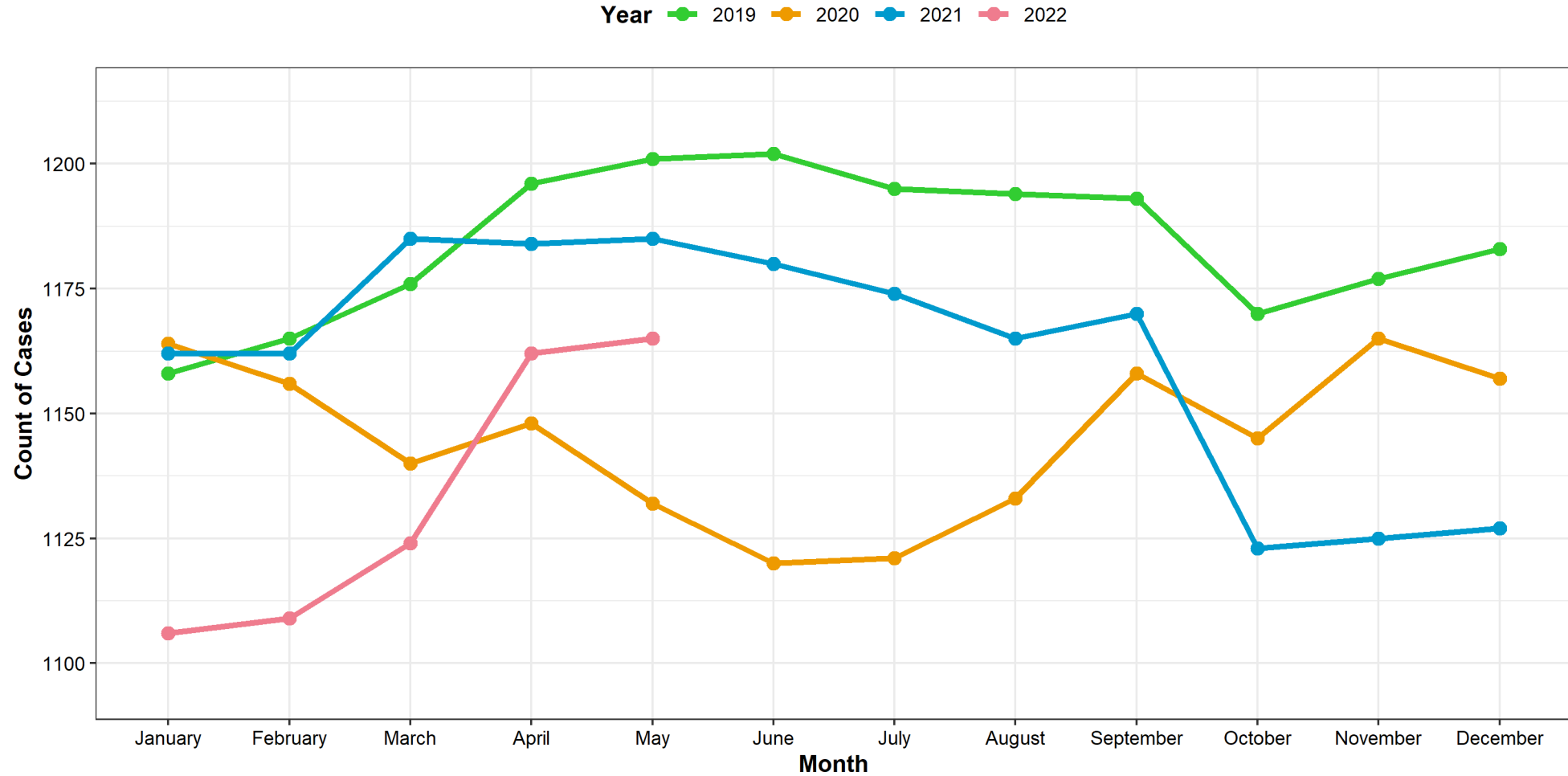
Assessment



# Child Protection – Open Family Service Cases

## Child Protection: Case Counts

Comparing Active Cases on the First of the Month: 2019 - 2022



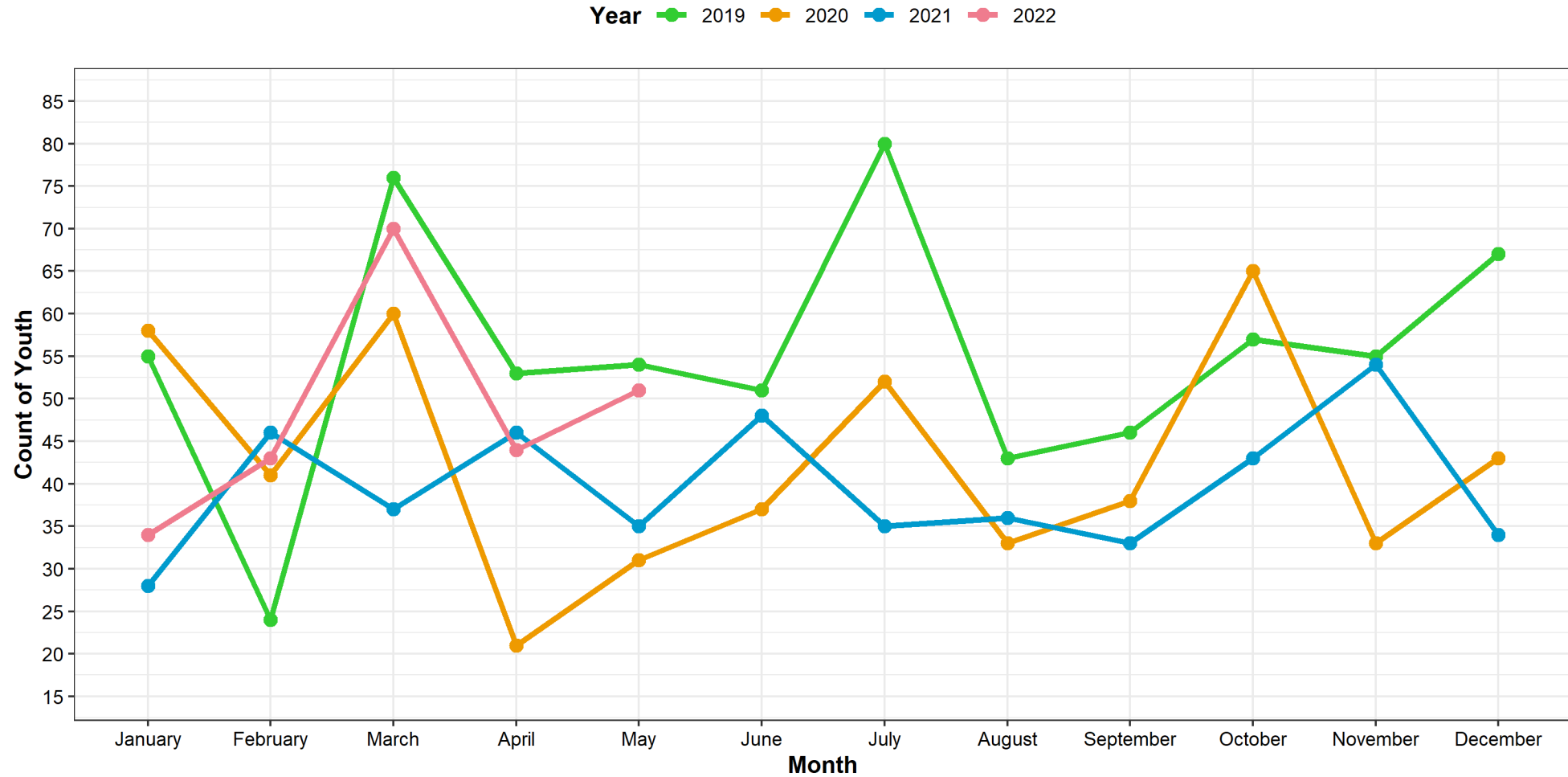
Extracted from Bridges (NH SACWIS) on 06/09/2022





# Child Protection – Children & Youth Entering Out of Home Care

Child Protection: Trends In Removals  
Comparing 2019 - 2022

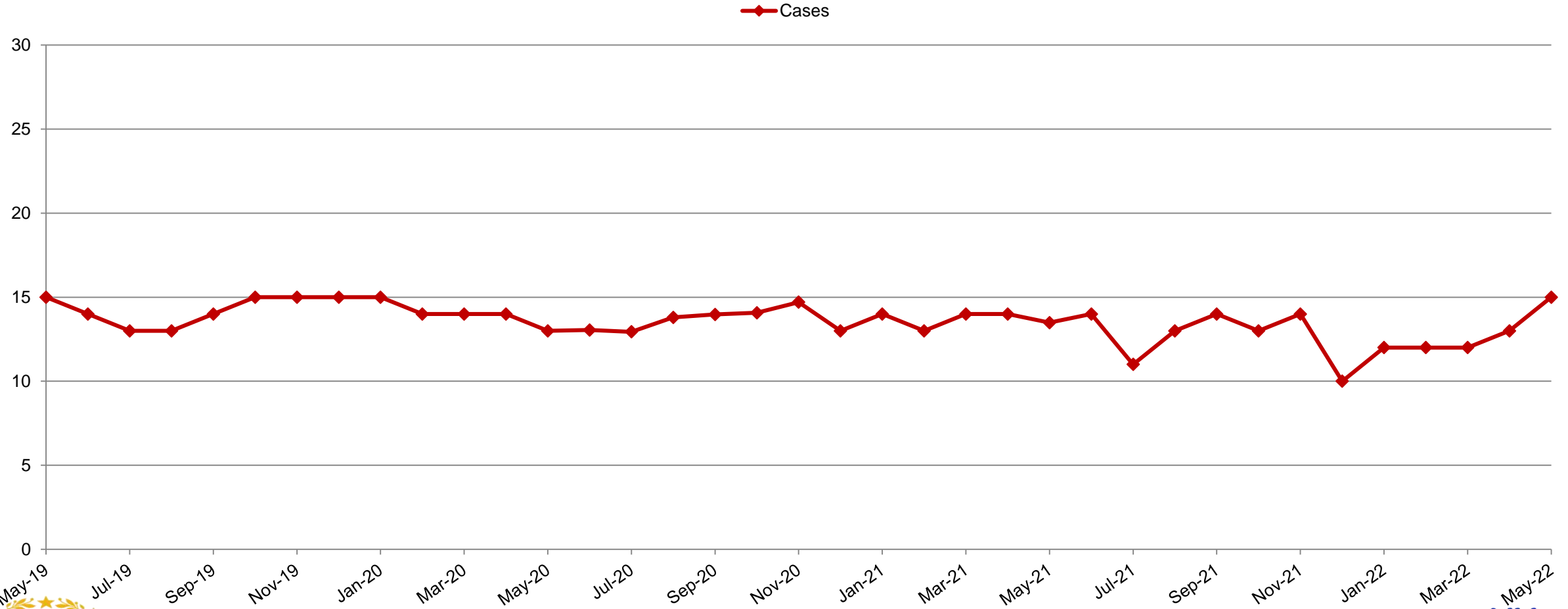


Extracted from Bridges (NH SACWIS) on 06/09/2022



# Child Protection Workforce Capacity- Family Service

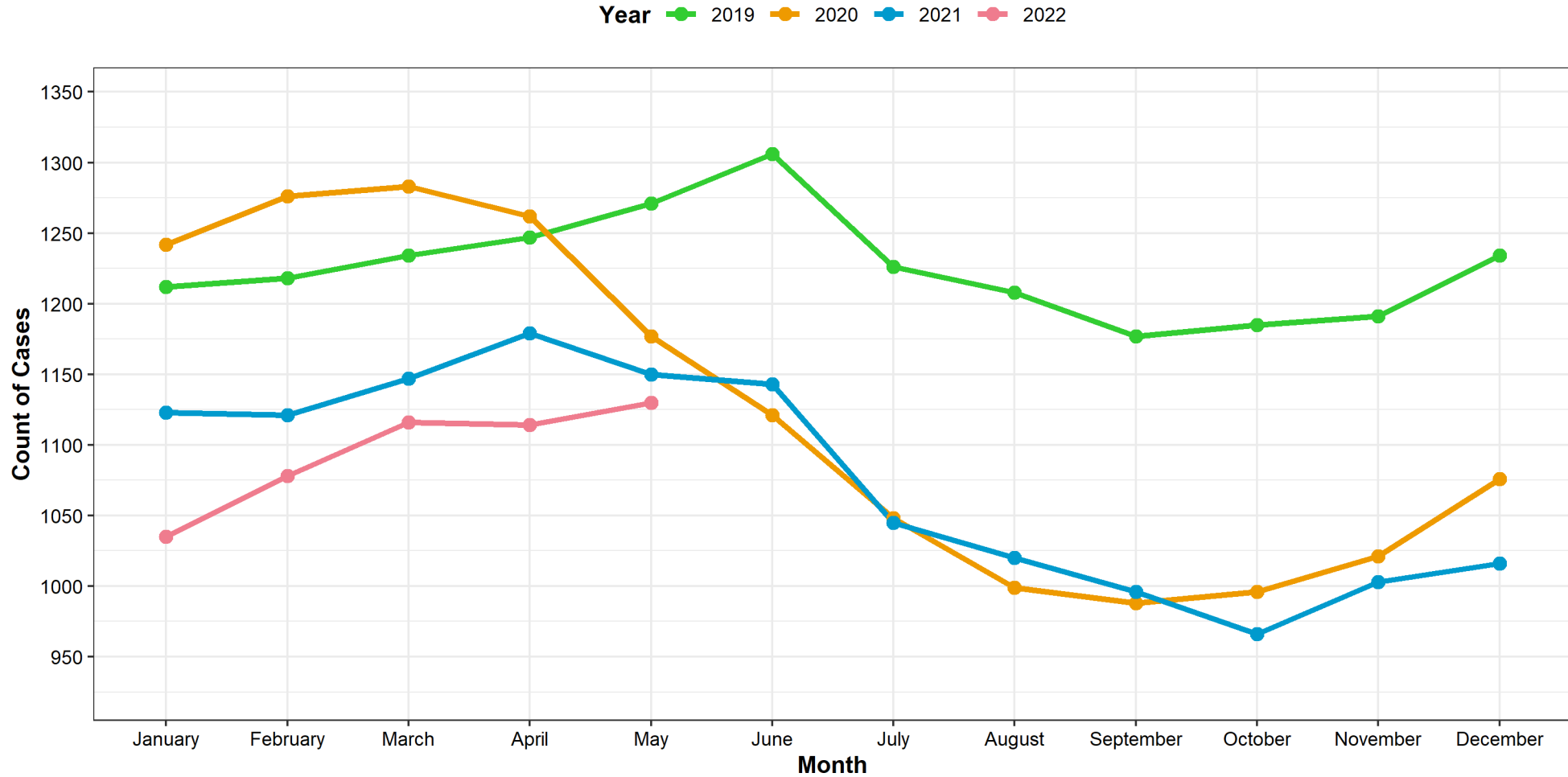
## Average Number of Cases Assigned per CPSW (Last day of the Month, 2019-2022)



# Juvenile Justice – Open Cases

## Juvenile Justice: Case Counts

Comparing Active Cases on the First of the Month: 2019 - 2022

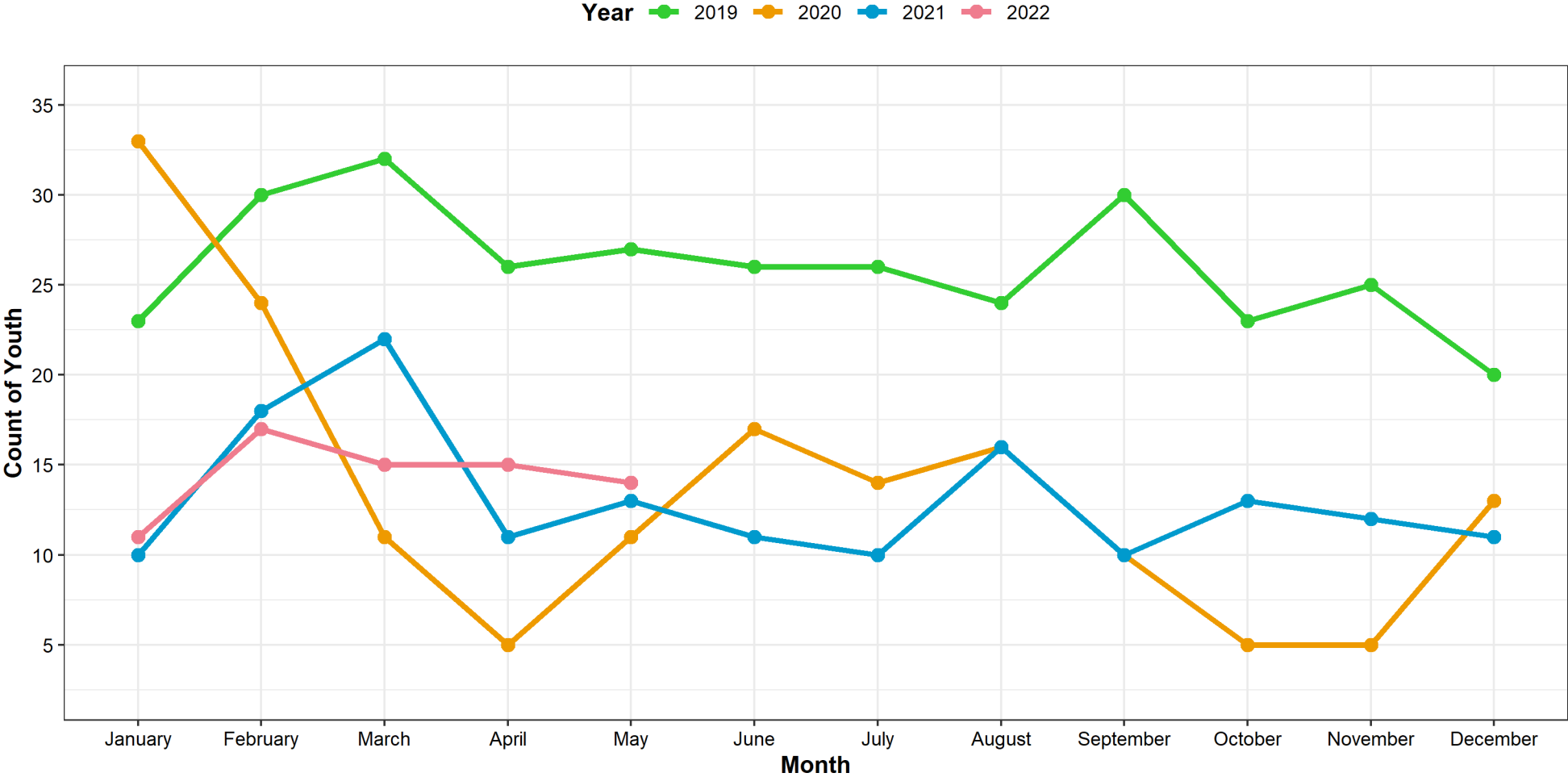


Extracted from Bridges (NH SACWIS) on 06/09/2022



# Juvenile Justice – Youth Entering Out of Home Care

Juvenile Justice: Trends In Removals  
Comparing 2019 - 2022



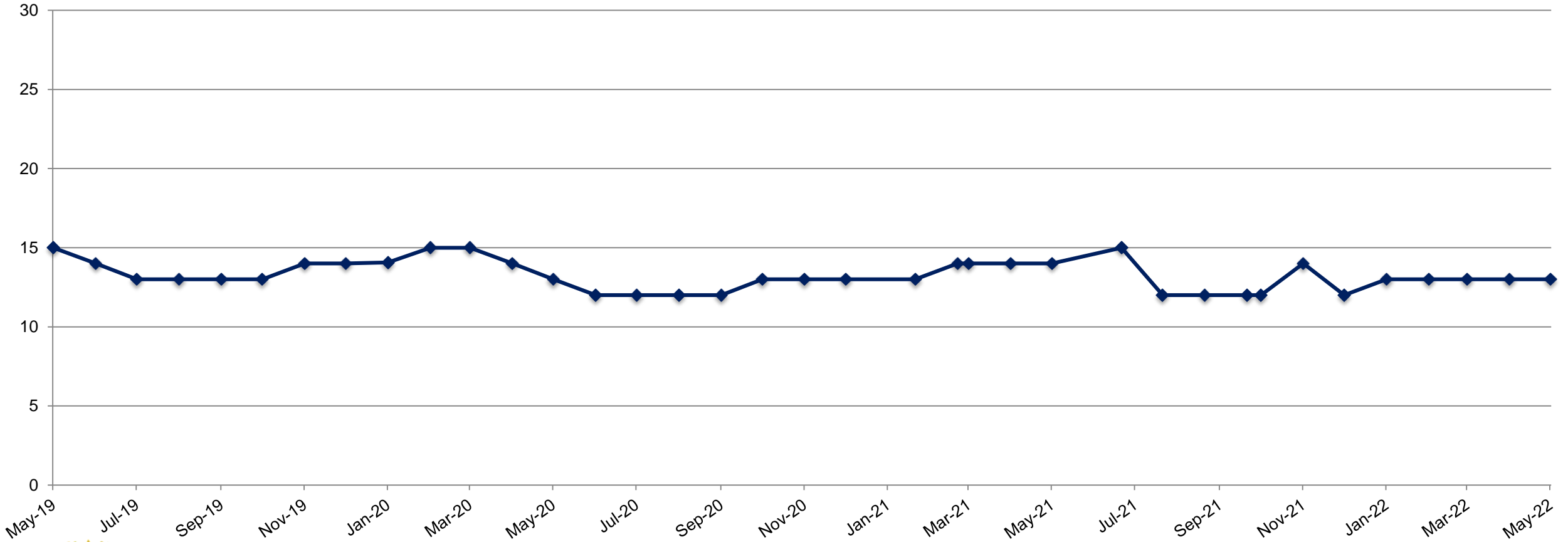
Extracted from Bridges (NH SACWIS) on 06/09/2022



# Workforce Capacity - Juvenile Justice

## Adjusted Average # of Cases per JPPO (Last Day of Month, 2019-2022)

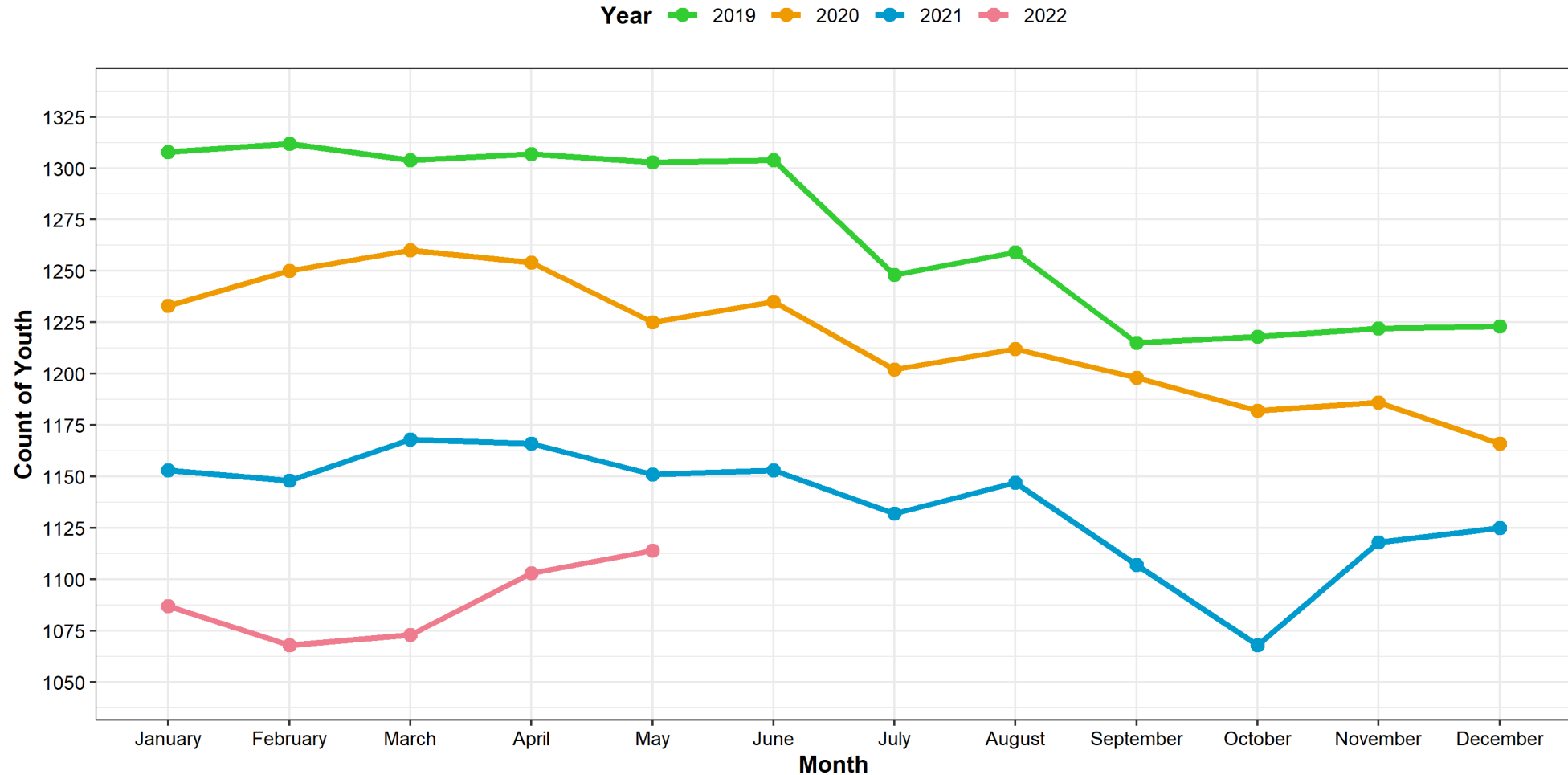
◆ JJ Cases



# Child Protection & Juvenile Justice - Children & Youth in Out of Home Care

## DCYF Placement Counts

CPS and JJS Combined: Count of Youth in Placement on the First of the Month: 2019 - 2022



Extracted from Bridges (NH SACWIS) on 06/09/2022



# SYSC Total Population

### Total SYSC Population

