



Monthly Data Dashboard

July 2023

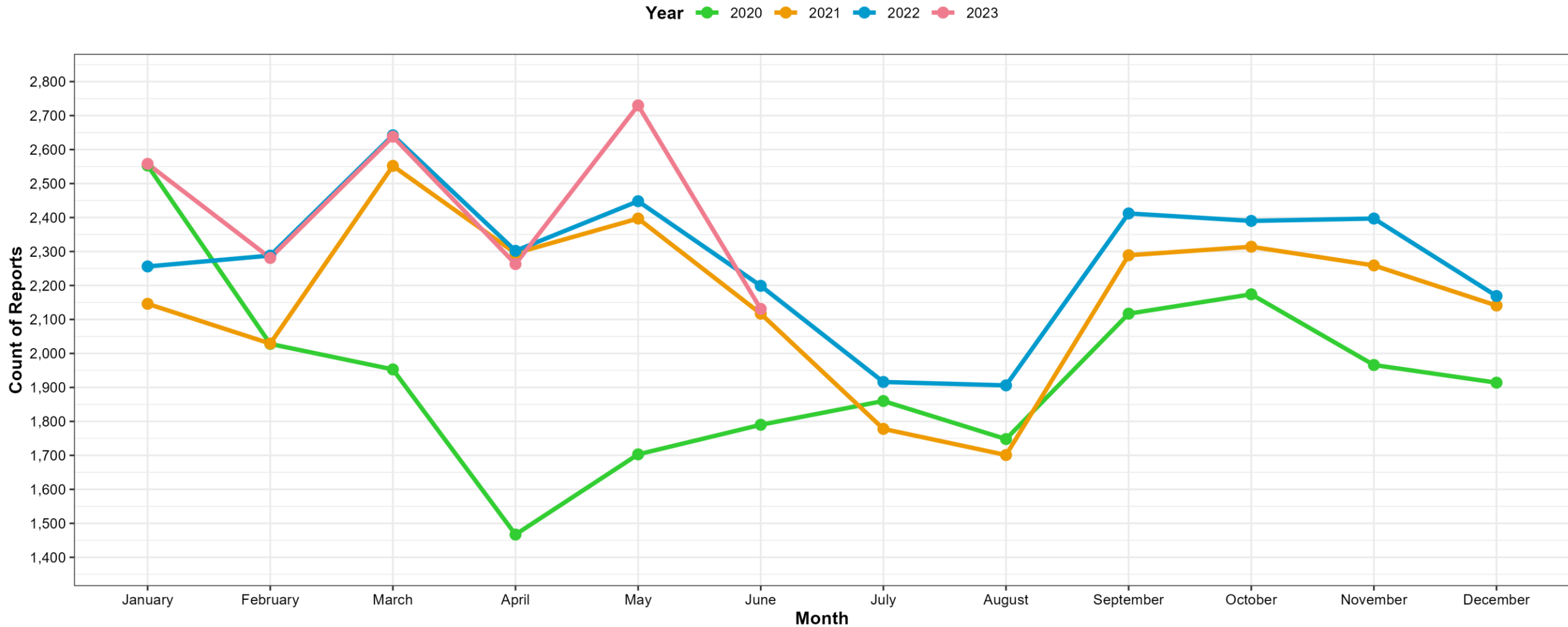
About this Data:

- Data reported throughout this book has been extracted from the New Hampshire statewide automated child welfare information system (SACWIS) known as Bridges.
- The data cannot be generalized given the multiple processes used to query the data and the complexity of the measures.
- Some of the underlying data is based on service authorizations which may take additional time to process. Accordingly, some data is withheld for an additional month to improve accuracy.
- All data in these monthly reports should be understood as preliminary as it is being extracted from a live case management system and will improve in accuracy over time as information is documented in individual cases. For this reason, please consider the annualized data reported in the annual DCYF Data Book as the most accurate source for identifying and following longer term trends.

• <https://www.dhhs.nh.gov/sites/g/files/ehbemt476/files/documents2/dcyf-data-book-2022.pdf>



Child Protection: Reports To Central Intake

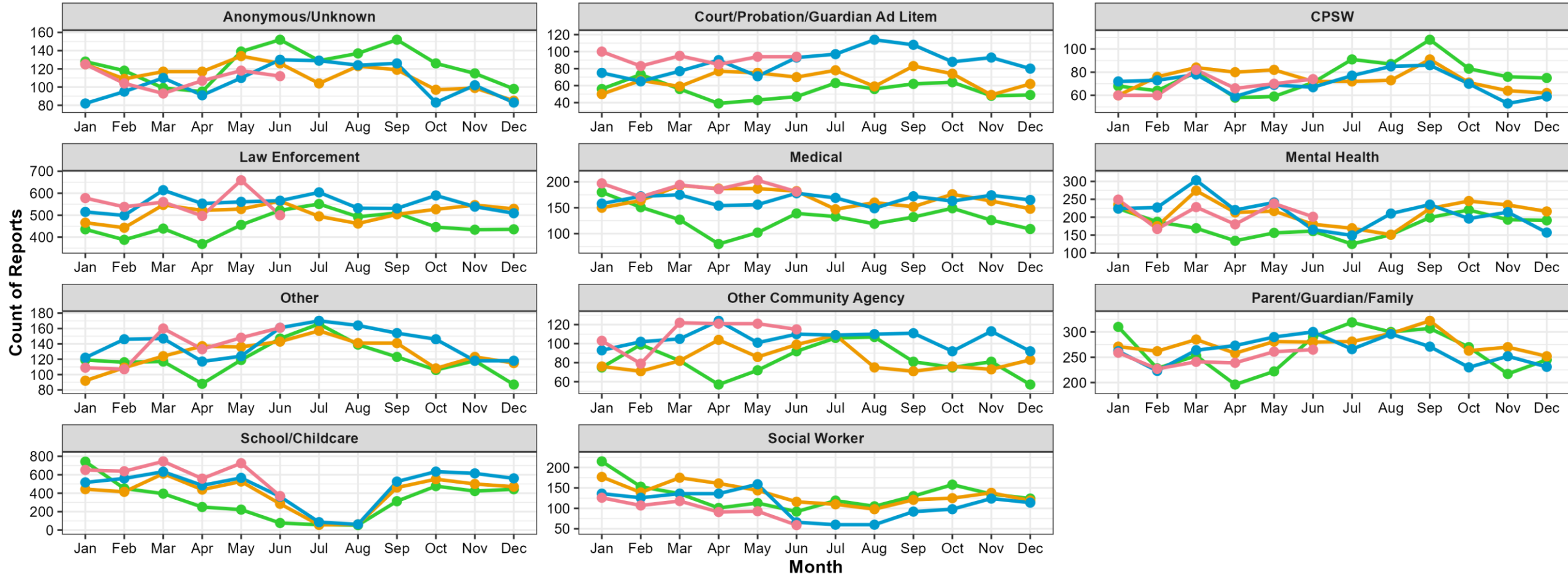


Extracted from Bridges (NH SACWIS) on 07/03/2023



Child Protection: Referrals by Reporter Type

Year ● 2020 ● 2021 ● 2022 ● 2023

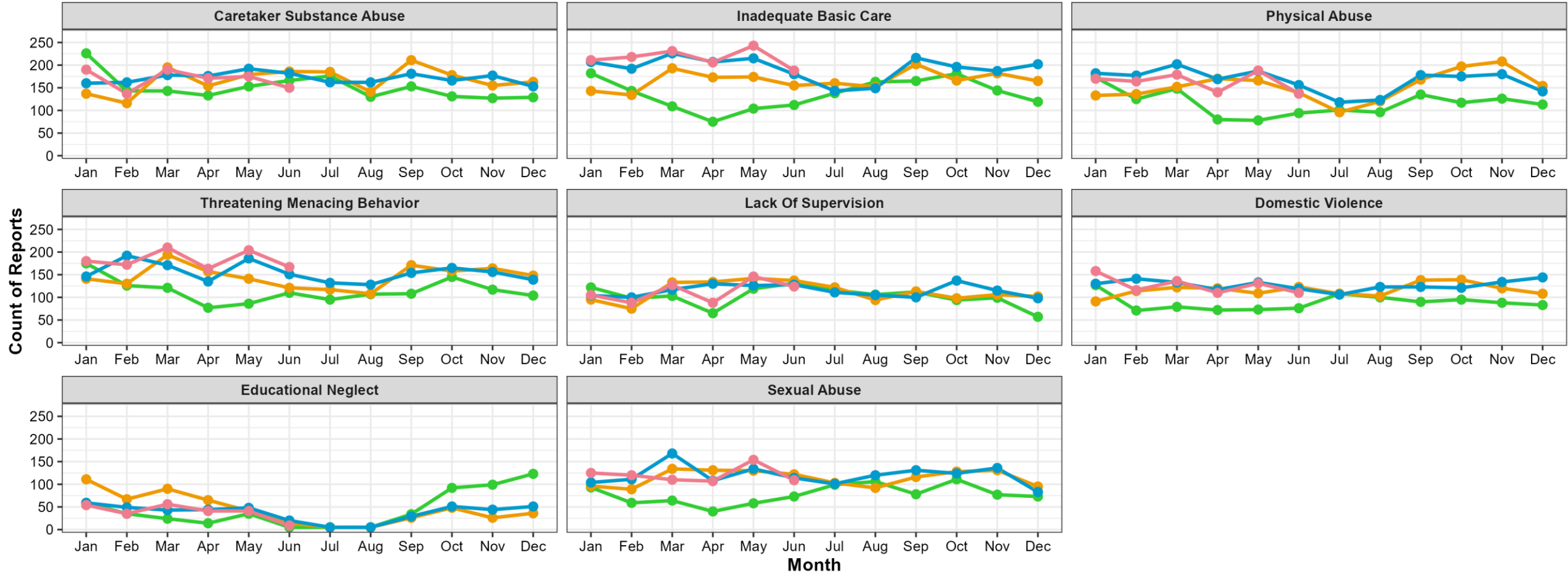


Extracted from Bridges (NH SACWIS) on 07/03/2023



Child Protection: Allegation Types

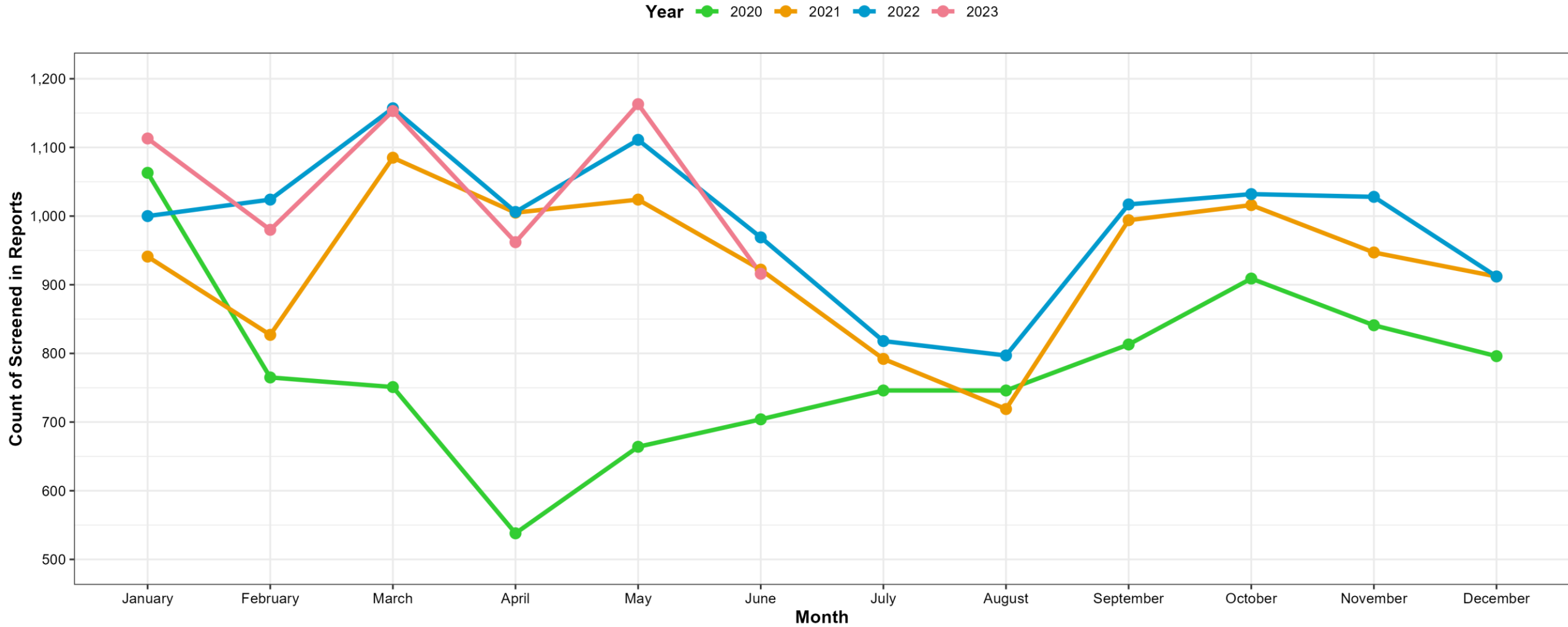
Year ● 2020 ● 2021 ● 2022 ● 2023



Extracted from Bridges (NH SACWIS) on 07/03/2023



Child Protection: Screened In Referrals



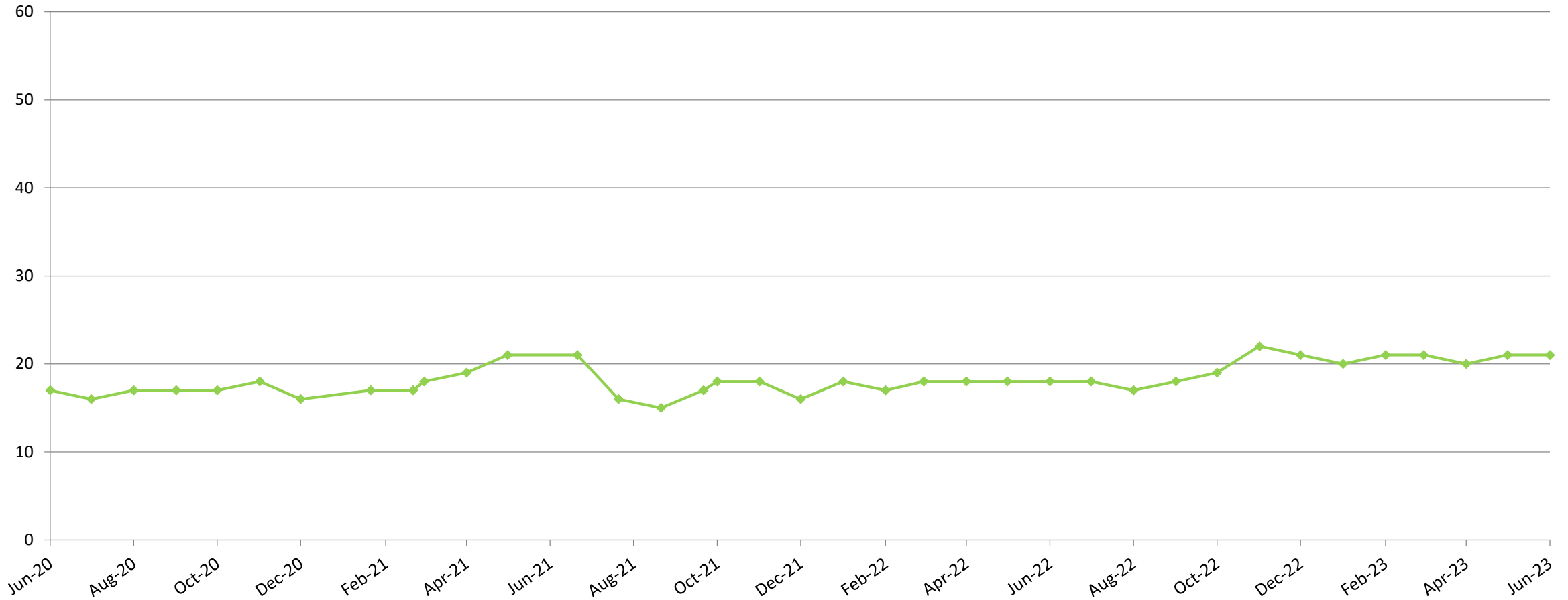
Extracted from Bridges (NH SACWIS) on 07/03/2023



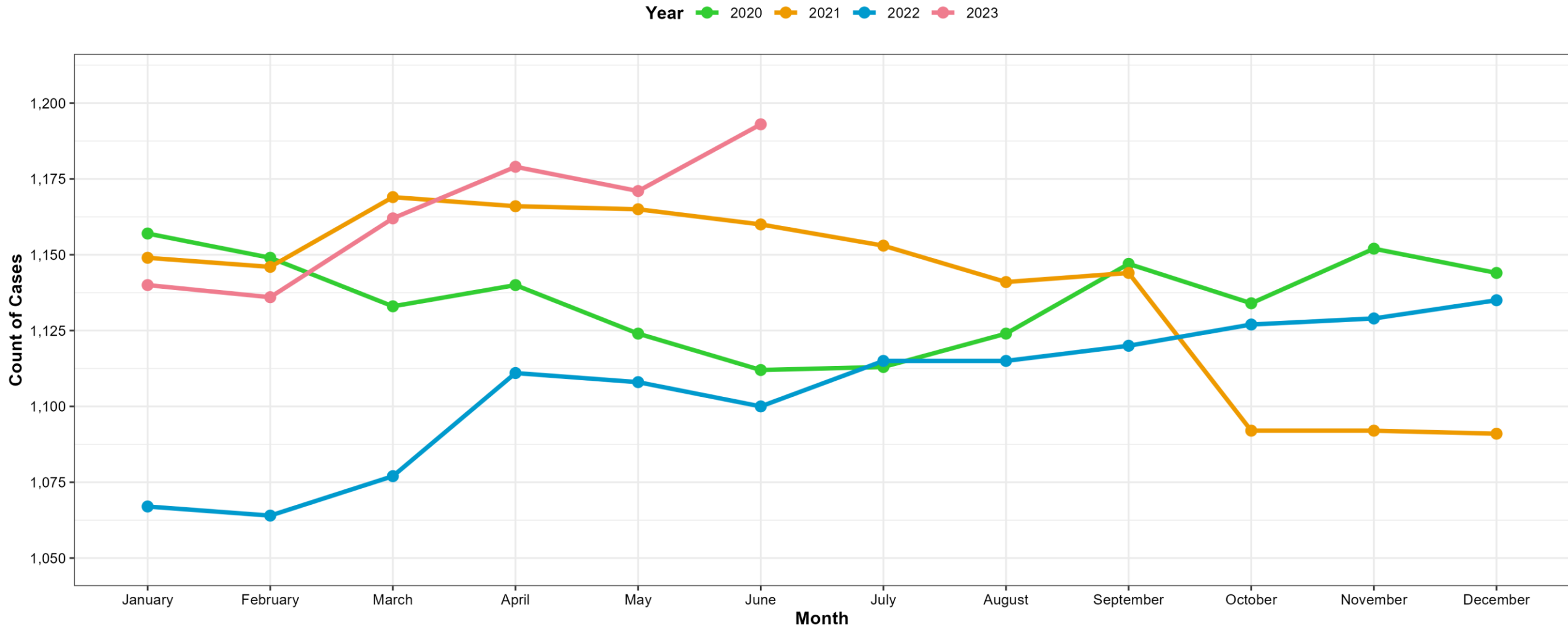
Child Protection: Assessment Workforce Capacity

Average Assessments Assigned Per CPSW 2020-2023
(Last day of Month)

Assessment



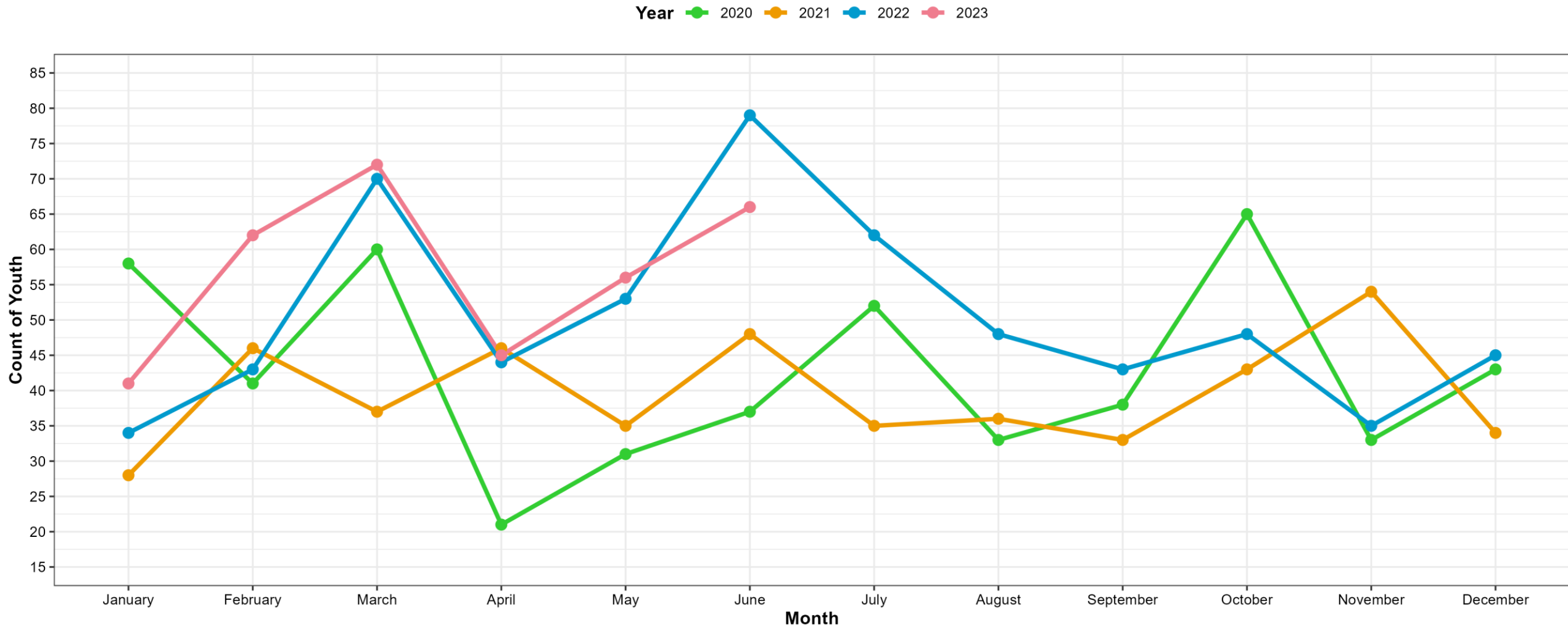
Child Protection: Open Family Service Cases



Extracted from Bridges (NH SACWIS) on 07/03/2023



Child Protection: Youth Entering Out of Home Care

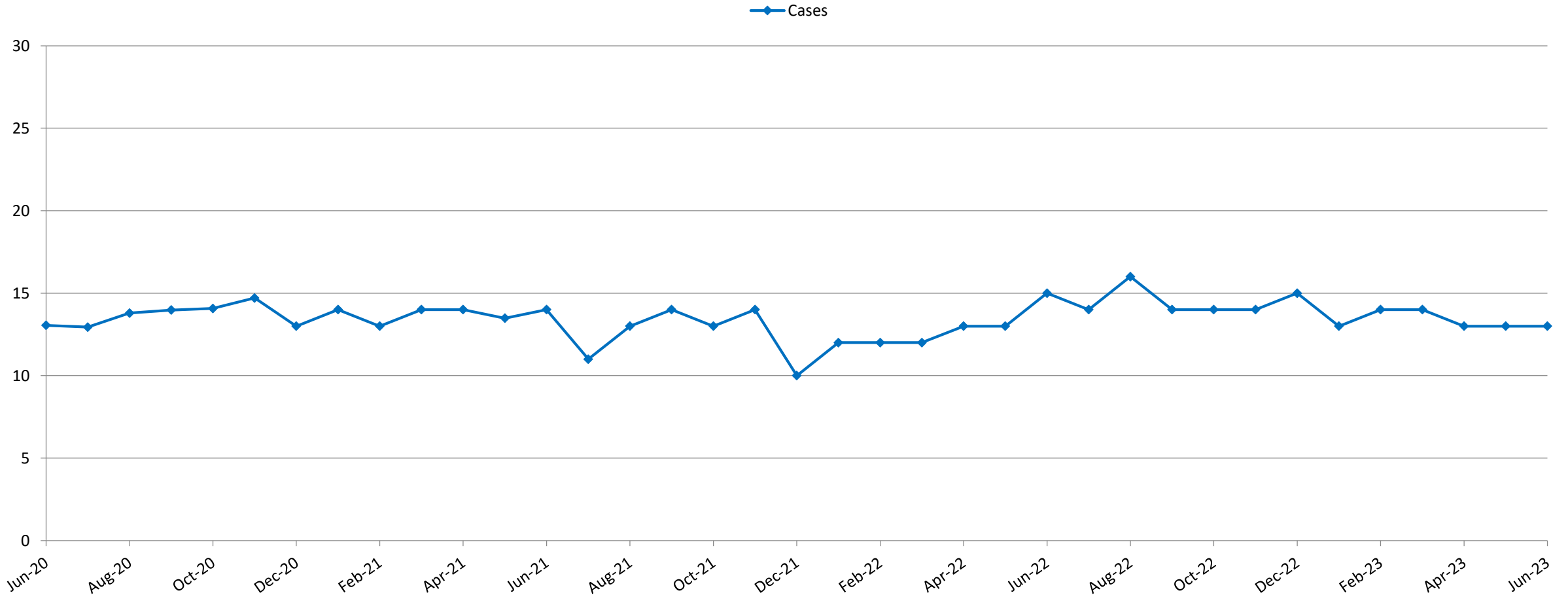


Extracted from Bridges (NH SACWIS) on 07/03/2023

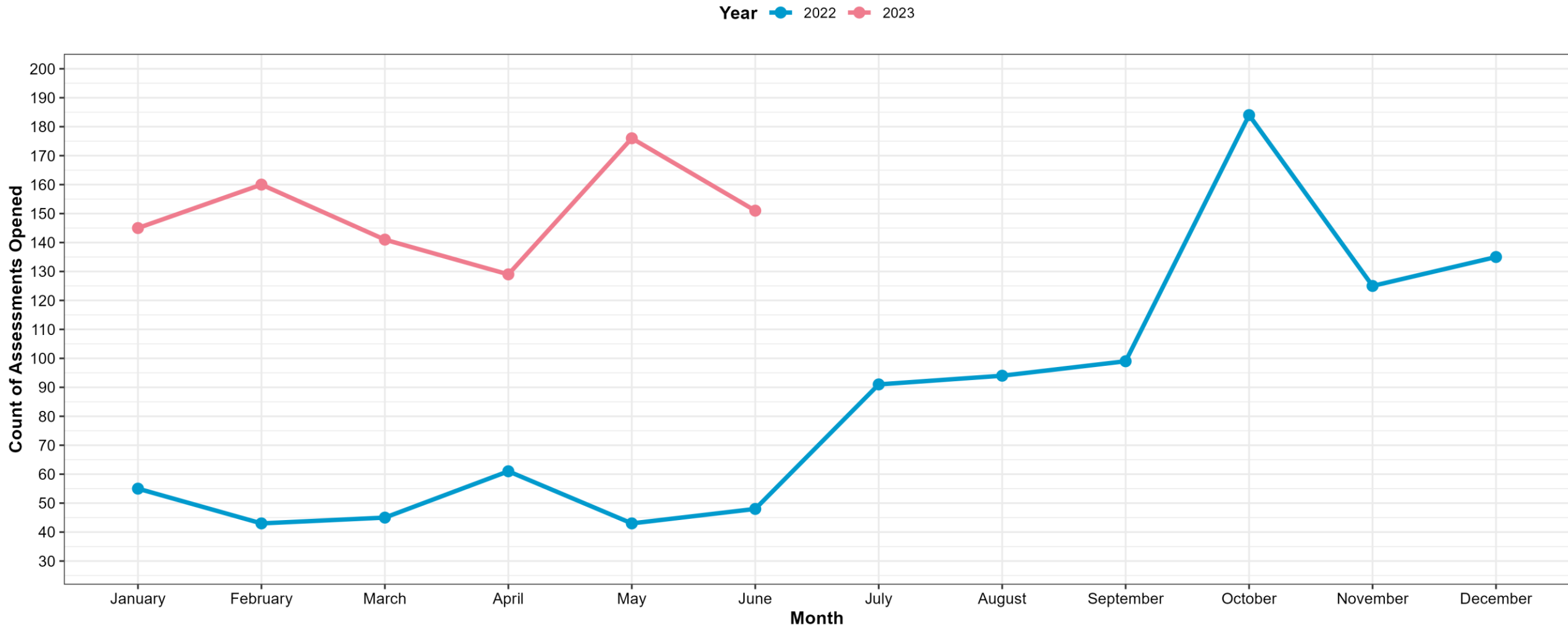


Child Protection: Family Service Workforce Capacity

Average Number of Cases Assigned per CPSW
(Last day of the Month, 2020-2023)



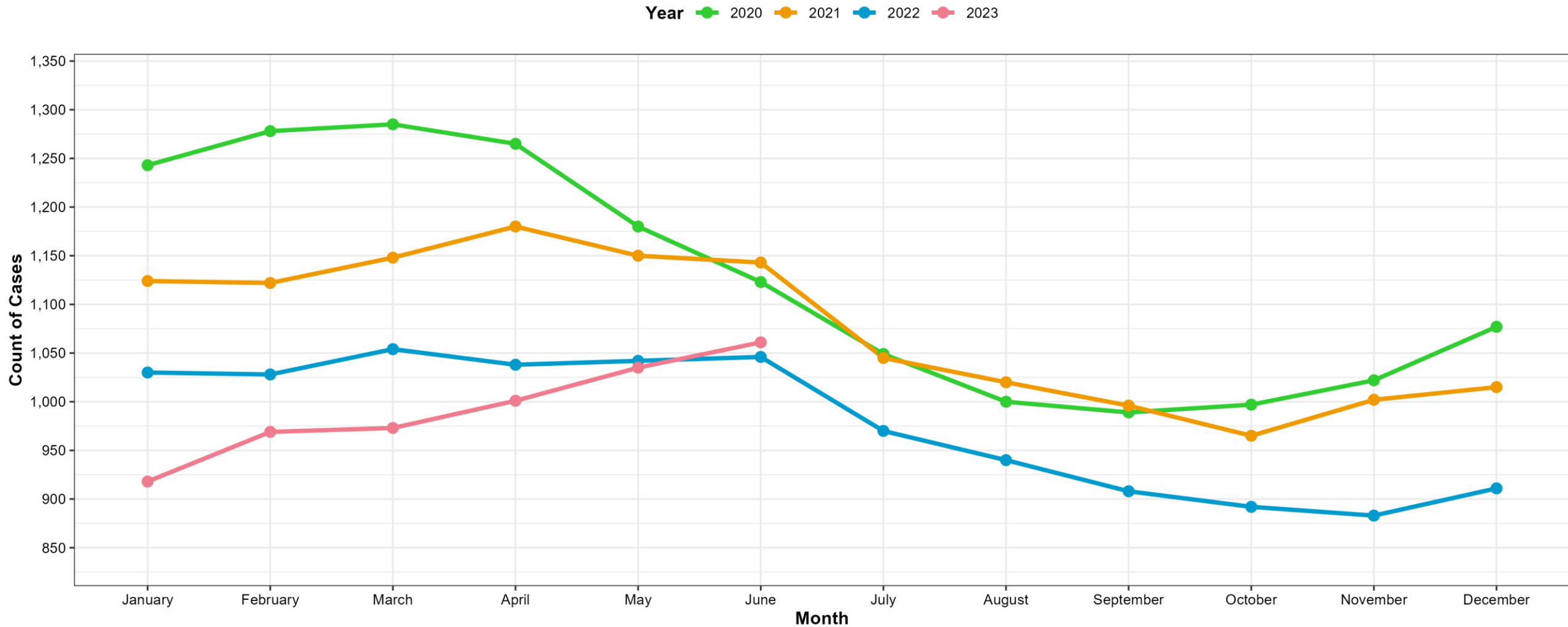
Juvenile Justice: Assessments Opened



Extracted from Bridges (NH SACWIS) on 07/03/2023



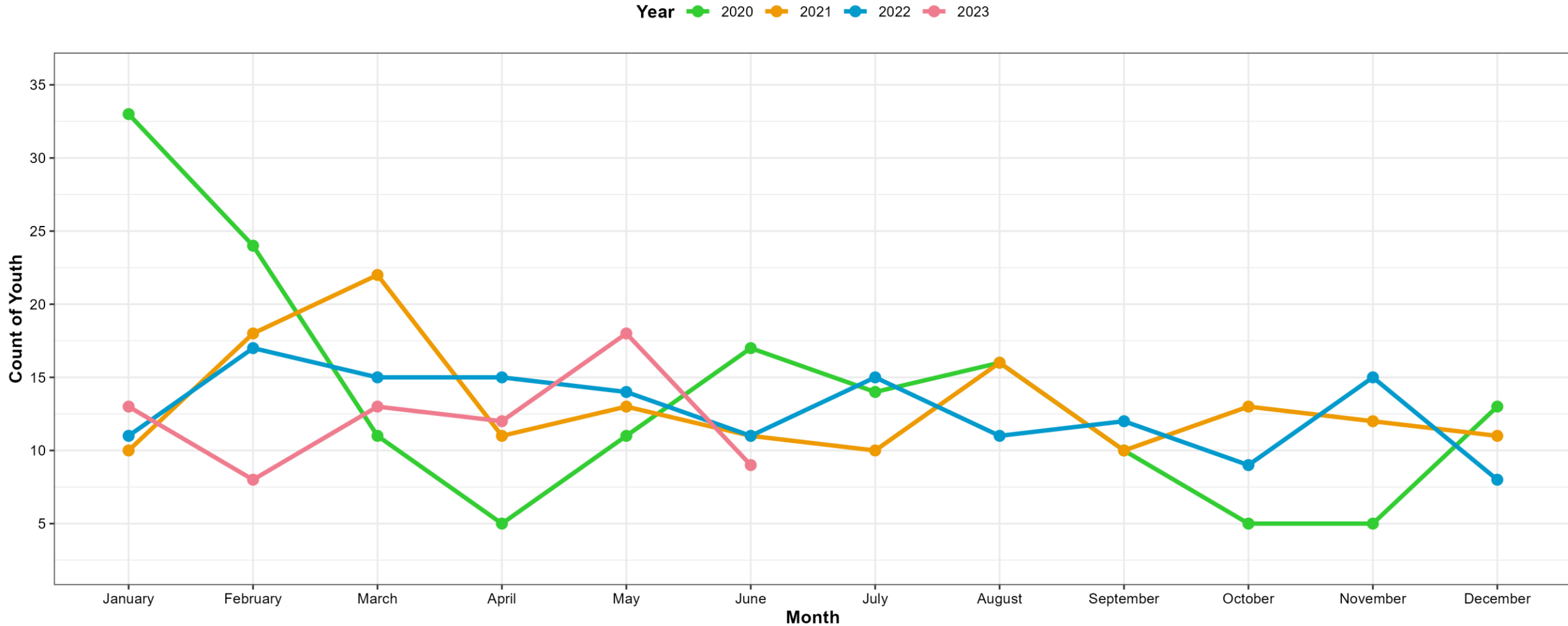
Juvenile Justice: Open Cases



Extracted from Bridges (NH SACWIS) on 07/03/2023



Juvenile Justice: Youth Entering Out of Home Care

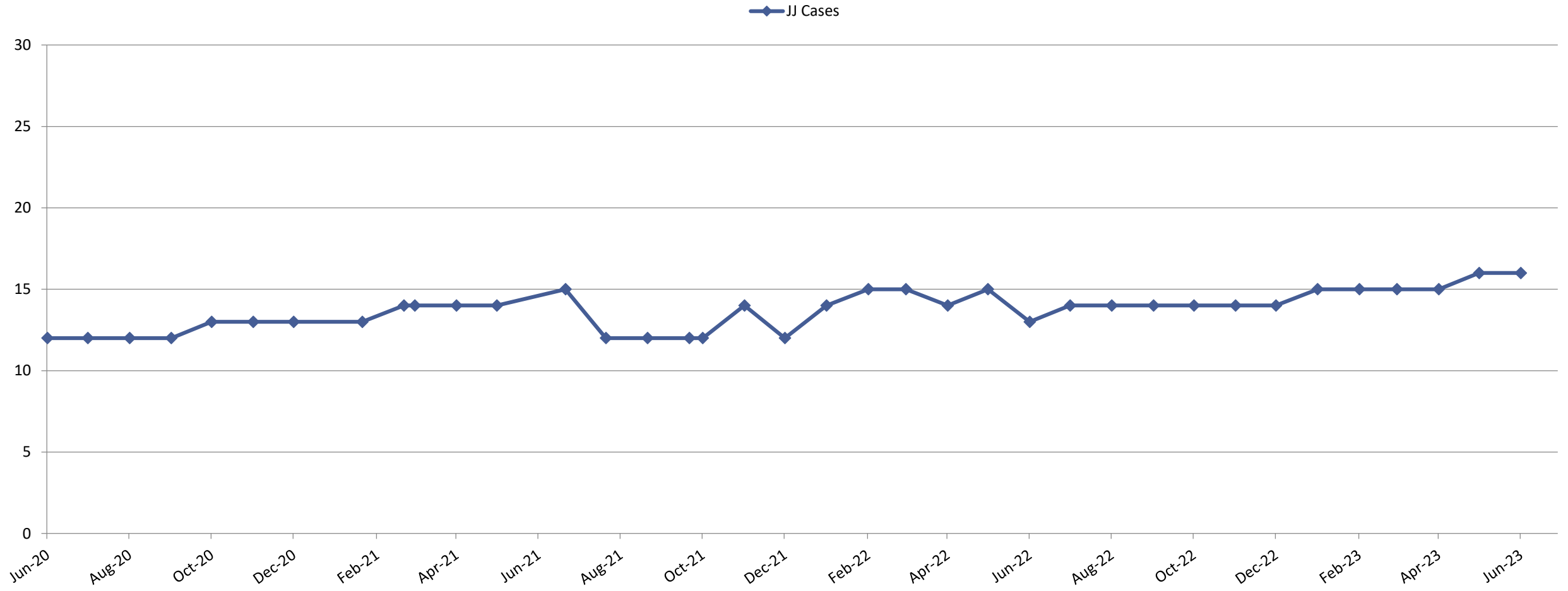


Extracted from Bridges (NH SACWIS) on 07/03/2023

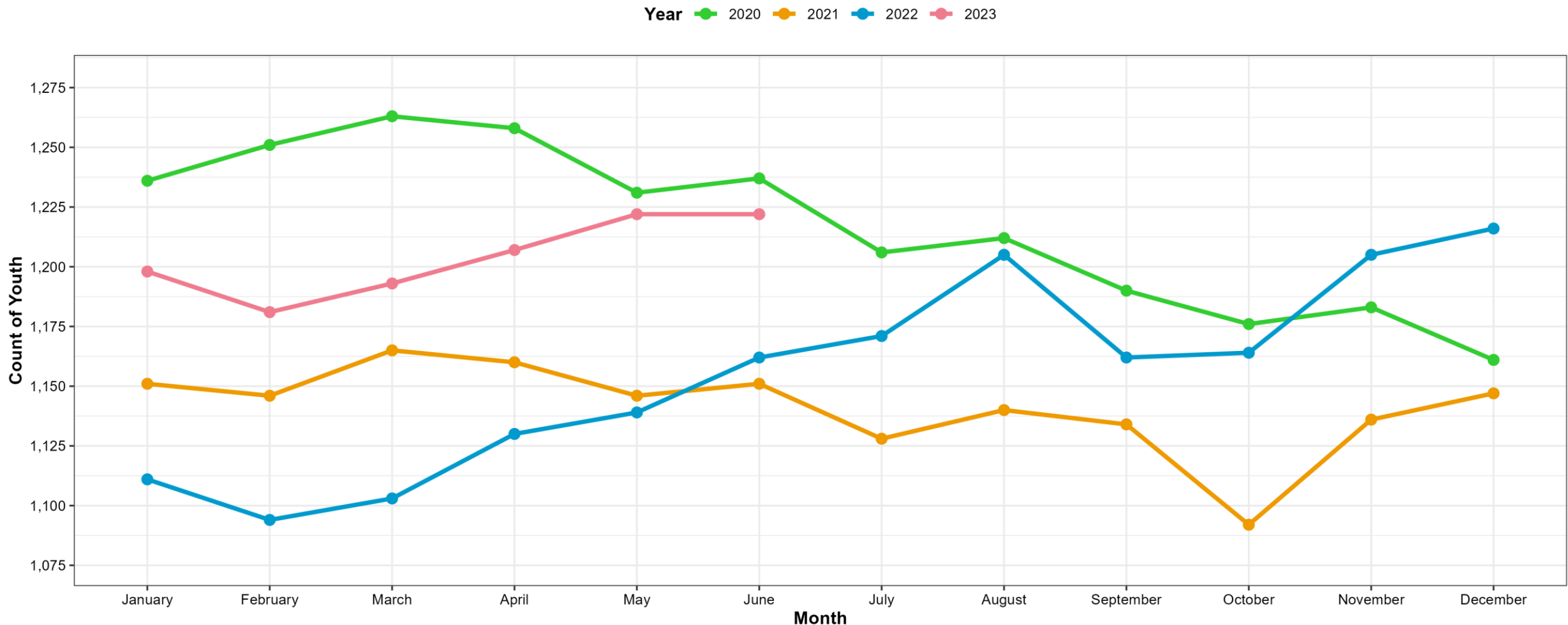


Juvenile Justice: Workforce Capacity

Adjusted Average # of Cases per JPPO
(Last Day of Month, 2020-2023)



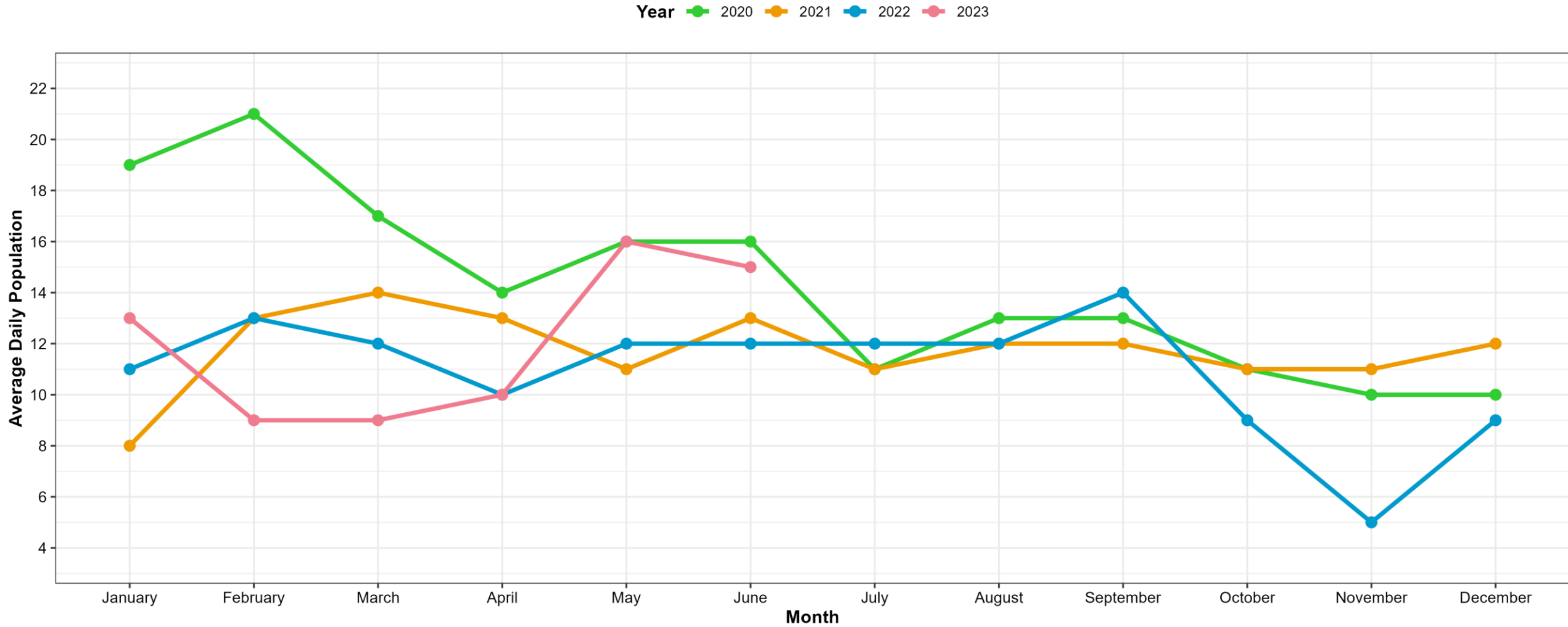
Child Protection & Juvenile Justice: Youth in Out of Home Care



Extracted from Bridges (NH SACWIS) on 07/03/2023



SYSC Population Census



Extracted from Bridges (NH SACWIS) on 07/03/2023

